

**CYGNAL**

**Survey of Likely General Election Voters**

North Carolina Statewide

*Conducted January 21 – 22, 2024*

n=600 |  $\pm 3.99\%$

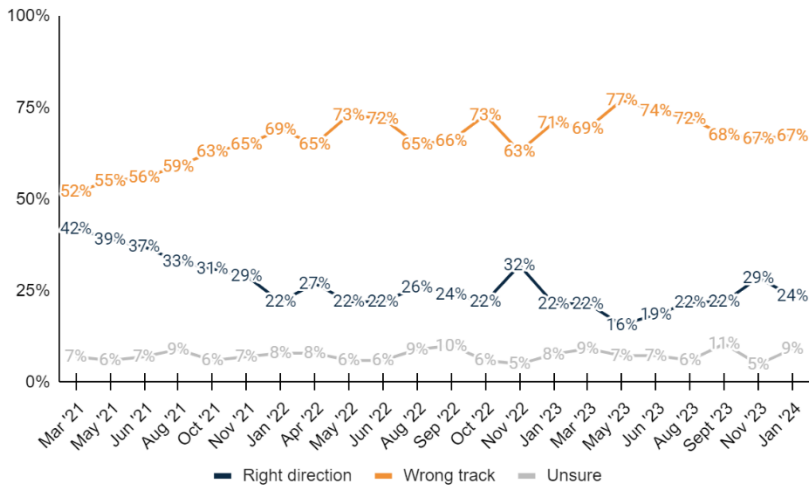
*Vote Method*

- How do you plan to vote in the November 2024 general election for President, Congress, and other Statewide and local offices?

	Jan '24	Nov '23	Sept '23	Aug '23
<b><u>Vote in-person on Election Day</u></b>	<b><u>46.5%</u></b>	<b><u>43.8%</u></b>	<b><u>41.6%</u></b>	<b><u>42.7%</u></b>
Definitely vote in-person on Election Day	31.9%	33.8%	30.1%	31.2%
Probably vote in-person on Election Day	14.5%	10.0%	11.5%	11.5%
<b><u>Vote absentee by mail</u></b>	<b><u>6.4%</u></b>	<b><u>7.8%</u></b>	<b><u>7.0%</u></b>	<b><u>6.7%</u></b>
Definitely vote absentee by mail	3.3%	6.0%	2.6%	4.1%
Probably vote absentee by mail	3.1%	1.8%	4.4%	2.7%
<b><u>Vote early in-person</u></b>	<b><u>47.1%</u></b>	<b><u>48.4%</u></b>	<b><u>51.4%</u></b>	<b><u>50.6%</u></b>
Definitely vote early in-person	25.1%	28.7%	25.9%	28.6%
Probably vote early in-person	22.0%	19.7%	25.5%	22.0%
Total	100.0%	100.0%	100.0%	100.0%

*US Direction*

- Generally speaking, would you say things in the United States are headed in the right direction or off on the wrong track?

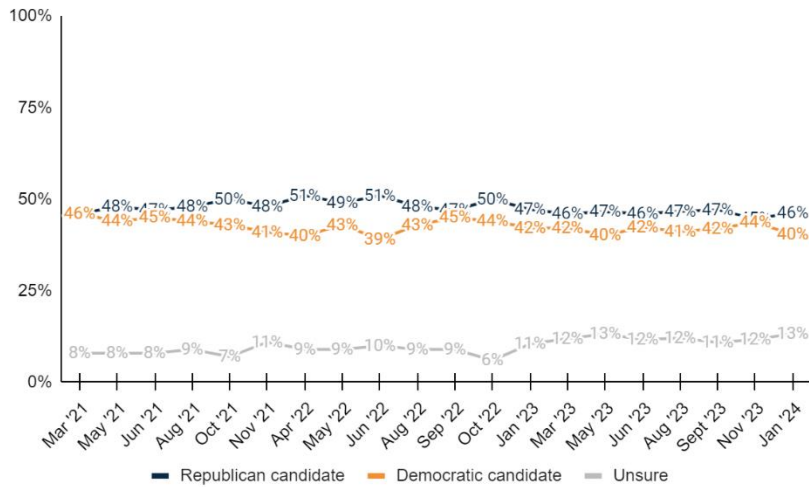


	Jan '24	Nov '23	Sept '23	Aug '23
<b><u>Right direction</u></b>	<b><u>23.5%</u></b>	<b><u>28.5%</u></b>	<b><u>22.0%</u></b>	<b><u>21.9%</u></b>
Definitely the right direction	4.6%	7.5%	4.2%	5.6%
Mostly the right direction	18.9%	21.0%	17.8%	16.3%
<b><u>Wrong track</u></b>	<b><u>67.3%</u></b>	<b><u>66.6%</u></b>	<b><u>67.5%</u></b>	<b><u>72.1%</u></b>
Mostly the wrong track	19.0%	14.6%	16.1%	20.8%
Definitely the wrong track	48.3%	51.9%	51.4%	51.2%
Unsure	9.1%	4.9%	10.5%	6.0%
Total	100.0%	100.0%	100.0%	100.0%



*Generic State Leg Ballot*

3. If the 2024 general election for the North Carolina State Legislature were held today, would you vote for the Republican candidate or the Democratic candidate?



	Jan '24	Nov '23	Sept '23	Aug '23
<b>Republican candidate</b>	<b>46.3%</b>	<b>44.7%</b>	<b>47.1%</b>	<b>46.7%</b>
Definitely the Republican candidate	34.7%	35.7%	39.0%	38.5%
Probably the Republican candidate	11.6%	9.0%	8.2%	8.2%
<b>Democratic candidate</b>	<b>40.4%</b>	<b>43.6%</b>	<b>42.0%</b>	<b>41.2%</b>
Probably the Democratic candidate	9.0%	9.0%	9.9%	9.4%
Definitely the Democratic candidate	31.4%	34.7%	32.1%	31.8%
Unsure	13.3%	11.7%	10.9%	12.1%
Total	100.0%	100.0%	100.0%	100.0%

Now thinking about schools in North Carolina...

*Education Satisfaction*

4. Overall, how satisfied are you with the quality of the K-12 education students receive today in your local schools?

	Freq.	%
<b>Satisfied</b>	<b>186</b>	<b>31.0%</b>
Completely satisfied	30	5.1%
Somewhat satisfied	155	25.9%
<b>Dissatisfied</b>	<b>288</b>	<b>48.0%</b>
Somewhat dissatisfied	167	27.9%
Completely dissatisfied	121	20.2%
Unsure	126	21.0%
Total	600	100.0%



*Kids in Home*

5. How many children in your household are currently enrolled in kindergarten through 12<sup>th</sup> grade?

	<b>Freq.</b>	<b>%</b>
None	393	65.5%
1	120	20.0%
2	60	10.0%
3	18	3.1%
4 or more	8	1.4%
Total	600	100.0%

*Educational Outcomes*

6. In your opinion, who is the most responsible for education outcomes in North Carolina?

	<b>Freq.</b>	<b>%</b>
Parents	163	27.2%
Teachers	65	10.8%
School administration	35	5.8%
Local school boards	102	17.0%
State Board of Education	153	25.5%
State Department of Public Instruction	59	9.8%
The Governor	25	4.1%
Total	600	100.0%

---

*School Choice*

7. Who is best suited to determine where a child should attend school out of the following options?

	<b>Freq.</b>	<b>%</b>
The child's parents	463	77.1%
Local school boards	82	13.7%
Unsure	55	9.2%
Total	600	100.0%

---

*Opportunity Scholarship Support*

8. The North Carolina Opportunity Scholarship Program provides eligible students with state-funded vouchers of up to \$7,200 that can be applied to tuition at a private school of their parents' choice. In the 2023-24 school year, about 32,100 students participated in this program. Do you support or oppose the Opportunity Scholarship Program?

	<b>Freq.</b>	<b>%</b>
<b>Support</b>	<b>384</b>	<b>64.0%</b>
Strongly support	252	41.9%
Somewhat support	133	22.1%



<b><u>Oppose</u></b>	<b><u>153</u></b>	<b><u>25.5%</u></b>
Somewhat oppose	63	10.5%
Strongly oppose	90	15.0%
Unsure	63	10.5%
Total	600	100.0%

*ESA Support*

9. An “education savings account” in K-12 education – often called an ESA – creates a state-funded savings account for parents. Parents can use these funds to pay for school tuition, tutoring, online education programs, therapies for students with special needs, textbooks or other instructional materials, or save for future college expenses. Do you support or oppose education savings accounts?

	<b>Freq.</b>	<b>%</b>
<b><u>Support</u></b>	<b><u>442</u></b>	<b><u>73.6%</u></b>
Strongly support	278	46.3%
Somewhat support	164	27.3%
<b><u>Oppose</u></b>	<b><u>74</u></b>	<b><u>12.3%</u></b>
Somewhat oppose	38	6.3%
Strongly oppose	35	5.9%
Unsure	85	14.1%
Total	600	100.0%

*System Preference*

10. North Carolina funds public schools using a system of formulas that determine how much money districts receive for personnel, programs, and services. Some people advocate for a different system in which funding is tied to the needs of the child and follows the child to where he or she attends school. In your opinion, which model is the better way for North Carolina to fund public schools?

	<b>Freq.</b>	<b>%</b>
Current system using formulas	97	16.2%
Funds tied to needs of the child	361	60.2%
Unsure	142	23.6%
Total	600	100.0%



*Learning Loss Satisfaction*

11. Which of the following statements do you most agree with? I am satisfied with how the public schools have address learning loss because:

	<b>Freq.</b>	<b>%</b>
Teachers and schools have worked hard to address the problem	164	27.3%
Schools have spent COVID money wisely to help address specific needs	15	2.6%
Tutors have been utilized wisely to help individual students	19	3.1%
Summer programs have done a good job of helping students regain knowledge and skills	52	8.7%
Unsure	350	58.4%
Total	600	100.0%

---

*Learning Loss Dissatisfaction*

12. Which of the following statements do you most agree with? I am NOT satisfied with how the public schools have address learning loss because:

	<b>Freq.</b>	<b>%</b>
Teachers and schools have not focused resources and staff on the problem	114	19.0%
Schools have not used COVID money wisely to address learning loss	118	19.7%
Schools need to spend more money on tutoring	71	11.8%
Summer programs have not done a good job of helping students regain knowledge and skills	36	5.9%
Unsure	261	43.5%
Total	600	100.0%

---

*Charter Schools*

13. To the best of your knowledge, are charter schools public schools?

	<b>Freq.</b>	<b>%</b>
Yes	269	44.8%
No	241	40.2%
Unsure	90	15.0%
Total	600	100.0%

---

*Charter Schools Support Oppose*

14. Charter schools are public schools that are governed by an independent board instead of a local school board. While charter schools are subject to the same academic requirements as traditional public schools, they are exempt from certain administrative regulations. Knowing this, do you support or oppose charter schools?

	<b>Freq.</b>	<b>%</b>
<b>Support</b>	<b>396</b>	<b>66.0%</b>
Strongly support	216	36.1%



Somewhat support	179	29.9%
<b><u>Oppose</u></b>	<b><u>141</u></b>	<b><u>23.6%</u></b>
Somewhat oppose	61	10.2%
Strongly oppose	80	13.4%
Unsure	63	10.5%
Total	600	100.0%

*Charter Schools Tuition*

15. To the best of your knowledge, can charter schools charge tuition?

	<b>Freq.</b>	<b>%</b>
Yes	162	27.1%
No	280	46.7%
Unsure	158	26.3%
Total	600	100.0%

*Charter Schools Tuition Impact*

16. Charter schools cannot charge tuition under North Carolina state law. Does this knowledge change your position in support of, or in opposition to, charter schools?

	<b>Freq.</b>	<b>%</b>
<b><u>Support</u></b>	<b><u>175</u></b>	<b><u>54.8%</u></b>
Strongly support	81	25.3%
Somewhat support	94	29.4%
<b><u>Oppose</u></b>	<b><u>73</u></b>	<b><u>22.8%</u></b>
Somewhat oppose	30	9.3%
Strongly oppose	43	13.4%
Unsure	72	22.5%
Total	320	100.0%

*County Funding*

17. Would you support or oppose a law requiring county governments to appropriate funds for the capital needs of charter schools in the same way county governments meet the capital needs of district schools?

	<b>Freq.</b>	<b>%</b>
<b><u>Support</u></b>	<b><u>291</u></b>	<b><u>48.6%</u></b>
Strongly support	123	20.5%
Somewhat support	168	28.0%
<b><u>Oppose</u></b>	<b><u>183</u></b>	<b><u>30.5%</u></b>



Somewhat oppose	67	11.1%
Strongly oppose	116	19.3%
Unsure	126	21.0%
Total	600	100.0%

*Charter School Options*

18. Would you support or oppose offering more charter school options in your local area?

	Freq.	%
<b><u>Support</u></b>	<b><u>355</u></b>	<b><u>59.1%</u></b>
Strongly support	190	31.6%
Somewhat support	165	27.5%
<b><u>Oppose</u></b>	<b><u>166</u></b>	<b><u>27.6%</u></b>
Somewhat oppose	59	9.8%
Strongly oppose	107	17.8%
Unsure	79	13.2%
Total	600	100.0%

*Consider Charter Schools*

19. If you had a school-aged child, would you consider leaving the traditional public school to which you've been assigned in favor of a charter school in your area?

	Freq.	%
<b><u>Consider</u></b>	<b><u>395</u></b>	<b><u>65.8%</u></b>
Definitely consider	227	37.8%
Probably consider	168	27.9%
<b><u>Not consider</u></b>	<b><u>154</u></b>	<b><u>25.7%</u></b>
Probably not consider	63	10.5%
Definitely not consider	91	15.1%
Unsure	52	8.6%
Total	600	100.0%

*Local Regulations*

20. Do you support or oppose local regulations requiring zoning to be applied in the same way to all public schools, traditional and charter?

	Freq.	%
<b><u>Support</u></b>	<b><u>308</u></b>	<b><u>51.3%</u></b>
Strongly support	156	26.0%
Somewhat support	152	25.4%
<b><u>Oppose</u></b>	<b><u>134</u></b>	<b><u>22.3%</u></b>
Somewhat oppose	59	9.8%
Strongly oppose	75	12.5%





Unsure	158	26.4%
Total	600	100.0%

*State Board of Education Election*

21. According to the North Carolina State Constitution, the State Board of Education shall consist of 13 members: the Lieutenant Governor, the State Treasurer, and 11 members appointed by the Governor. Last session, legislation was introduced which would have required all members of the State Board of Education to be elected. Would you support or oppose such legislation?

	Freq.	%
<b><u>Support</u></b>	<b><u>385</u></b>	<b><u>64.2%</u></b>
Strongly support	210	35.0%
Somewhat support	175	29.2%
<b><u>Oppose</u></b>	<b><u>98</u></b>	<b><u>16.3%</u></b>
Somewhat oppose	48	7.9%
Strongly oppose	50	8.4%
Unsure	117	19.5%
Total	600	100.0%

*Candidate Support*

22. Would you vote for a candidate with an education platform you support, even if you typically vote for candidates from a different political party?

	Freq.	%
<b><u>Vote for</u></b>	<b><u>399</u></b>	<b><u>66.5%</u></b>
Definitely vote for	152	25.4%
Probably vote for	247	41.1%
<b><u>Not vote for</u></b>	<b><u>101</u></b>	<b><u>16.9%</u></b>
Probably not vote for	67	11.2%
Definitely not vote for	34	5.7%
Unsure	100	16.6%
Total	600	100.0%

*County Funds*

23. Would you support or oppose counties that appropriate funds to address the capital needs of charter schools?

	Freq.	%
<b><u>Support</u></b>	<b><u>324</u></b>	<b><u>54.0%</u></b>
Strongly support	134	22.4%
Somewhat support	189	31.6%
<b><u>Oppose</u></b>	<b><u>156</u></b>	<b><u>26.0%</u></b>



Somewhat oppose	68	11.3%
Strongly oppose	88	14.7%
Unsure	120	20.0%
Total	600	100.0%

24. Are you female or male?

	Freq.	%
Female	330	55.0%
Male	270	45.0%
Total	600	100.0%

25. What age range do you fall within?

	Freq.	%
<b><u>Under 50</u></b>	<b>247</b>	<b>41.2%</b>
18 - 34	113	18.8%
35 - 49	134	22.3%
<b><u>50 and Over</u></b>	<b>353</b>	<b>58.8%</b>
50 - 64	170	28.3%
65+	183	30.6%
Total	600	100.0%

26. How are you registered to vote in North Carolina? You may consider yourself of a different party, but what does your voter registration card show?

	Freq.	%
Republican	195	32.5%
Democrat	210	35.0%
Independent/Unaffiliated	166	27.7%
Other	11	1.8%
Unsure	18	3.0%
Total	600	100.0%

27. And thinking about your views toward politics and government, would you say you are...

	Freq.	%
<b><u>Conservative</u></b>	<b>264</b>	<b>44.0%</b>
Very conservative	124	20.7%
Somewhat conservative	140	23.3%
<b><u>Moderate</u></b>	<b>177</b>	<b>29.4%</b>
<b><u>Liberal</u></b>	<b>128</b>	<b>21.4%</b>
Somewhat liberal	63	10.5%
Very liberal	65	10.9%



Unsure	31	5.2%
Total	600	100.0%

28. Do you consider the area where you live to be more rural, suburban, or urban?

	Freq.	%
Rural	264	44.0%
Suburban	264	44.0%
Urban	72	12.0%
Total	600	100.0%

29. What annual household income range do you fall within out of the following options?

	Freq.	%
Less than \$40,000	91	15.1%
\$40,000 - \$69,999	118	19.7%
\$70,000 - \$99,999	122	20.4%
\$100,000 or more	219	36.4%
Unsure	50	8.3%
Total	600	100.0%

30. Which of the following best describes your race or ethnicity?

	Freq.	%
White or Caucasian	419	69.9%
Asian or Pacific Islander	9	1.5%
Black or African American	129	21.5%
Hispanic or Latino	18	3.0%
Other	17	2.8%
Unsure	8	1.3%
Total	600	100.0%

31. Thinking back, who did you vote for in the 2020 election for President?

	Freq.	%
Republican Donald Trump	273	45.5%
Democrat Joe Biden	265	44.2%
Another candidate	20	3.3%
Did not vote in 2020	15	2.5%
Unsure	27	4.5%
Total	600	100.0%

32. Are you or are any of your immediate family members employed as a teacher, teaching anywhere between kindergarten through 12<sup>th</sup> grade?

	Freq.	%
<b>Yes</b>	<b>168</b>	<b>28.0%</b>
Yes, I am a teacher	25	4.2%
Yes, a family member is a teacher	137	22.8%



Yes, I am a teacher and a family member is a teacher	6	1.0%
<b><u>No</u></b>	<b><u>421</u></b>	<b><u>70.2%</u></b>
Unsure	11	1.8%
Total	600	100.0%

33. What's the highest level of education you have completed?

	Freq.	%
<b><u>No College</u></b>	<b><u>336</u></b>	<b><u>56.0%</u></b>
Some high school	6	1.0%
High school diploma/GED	78	12.9%
Technical Certification	33	5.5%
Some college or Associate's Degree	220	36.6%
<b><u>At least College</u></b>	<b><u>260</u></b>	<b><u>43.3%</u></b>
Four-year undergraduate or Bachelor's Degree	145	24.1%
Graduate degree or further	115	19.2%
Unsure	4	0.7%
Total	600	100.0%

34. General Election X of 4

	Freq.	%
0 of 4	13	2.1%
1 of 4	94	15.7%
2 of 4	100	16.6%
3 of 4	111	18.5%
4 of 4	282	47.0%
Total	600	100.0%

35. Geo – Congressional District

	Freq.	%
1	56	9.4%
2	18	2.9%
3	32	5.3%
4	44	7.4%
5	57	9.5%
6	43	7.1%
7	49	8.1%
8	33	5.5%
9	61	10.2%
10	53	8.8%
11	48	7.9%
12	35	5.8%
13	36	5.9%



14	36	6.0%
Total	600	100.0%

### 36. Geo - DMA

	Freq.	%
<b><u>Charlotte/West</u></b>	<b><u>216</u></b>	<b><u>36.0%</u></b>
Charlotte	164	27.4%
Greenvll-Spart-Ashevl-And	49	8.2%
Chattanooga	2	0.3%
Atlanta dma	1	0.1%
<b><u>Central</u></b>	<b><u>113</u></b>	<b><u>18.8%</u></b>
Greensboro-H.Point-W.Salem	106	17.6%
Myrtle Beach-Florence	7	1.2%
<b><u>Raleigh-Durham (Fayetvll)</u></b>	<b><u>185</u></b>	<b><u>30.9%</u></b>
<b><u>Coastal</u></b>	<b><u>85</u></b>	<b><u>14.2%</u></b>
Greenville-N.Bern-Washngtn	42	7.0%
Wilmington	33	5.5%
Norfolk-Portsmth-Newpt Nws	10	1.7%
Total	600	100.0%

### 37. Age + Income

	Freq.	%
<65 <\$40k	54	9.0%
<65 \$70k-\$100k	76	12.7%
<65 \$40k-\$70k	77	12.8%
<65 \$100k+	175	29.1%
65+ <\$40k	37	6.1%
65+ \$70k-\$100k	46	7.6%
65+ \$40k-\$70k	41	6.9%
65+ \$100k+	44	7.3%
Unsure	50	8.3%
Total	600	100.0%

### 38. Age + Gender

	Freq.	%
F 18 - 34	61	10.1%
F 35 - 49	77	12.9%
F 50 - 64	90	15.0%
F 65+	102	17.0%
M 18 - 34	52	8.7%
M 35 - 49	57	9.5%
M 50 - 64	79	13.2%
M 65+	81	13.6%
Total	600	100.0%



### 39. Race + Gender

	Freq.	%
White Female	219	36.5%
White Male	201	33.4%
Asian Female	4	0.7%
Asian Male	5	0.8%
Black Female	90	14.9%
Black Male	39	6.6%
Hispanic Female	7	1.1%
Hispanic Male	11	1.9%
Other Female	7	1.2%
Other Male	10	1.7%
Unsure	8	1.3%
Total	600	100.0%

### 40. Education + Gender

	Freq.	%
Female At least College	139	23.1%
Female No degree	189	31.5%
Male At least College	121	20.2%
Male No degree	147	24.5%
Unsure	4	0.7%
Total	600	100.0%

### 41. Partisanship + Age

	Freq.	%
Republican 18-34	32	5.4%
Republican 35-49	41	6.9%
Republican 50-64	64	10.6%
Republican 65+	57	9.5%
Democrat 18-34	37	6.2%
Democrat 35-49	47	7.8%
Democrat 50-64	58	9.6%
Democrat 65+	68	11.4%
Independent/UAF 18-34	34	5.6%
Independent/UAF 35-49	40	6.7%
Independent/UAF 50-64	44	7.3%
Independent/UAF 65+	49	8.1%
Other 18-34	6	1.0%
Other 35-49	3	0.5%
Other 50-64	1	0.2%
Other 65+	1	0.1%
Unsure	18	3.0%
Total	600	100.0%



## 42. Partisanship + Gender

	Freq.	%
Republican Female	98	16.3%
Republican Male	97	16.1%
Democrat Female	133	22.2%
Democrat Male	77	12.8%
Independent/UAF Female	81	13.5%
Independent/UAF Male	85	14.1%
Other Female	3	0.6%
Other Male	8	1.3%
Unsure	18	3.0%
Total	600	100.0%

### METHODOLOGY

This probabilistic survey was conducted January 21 – 22, 2024, with 600 likely general election voters. It has a margin of error of  $\pm 3.99\%$ . Known registered voters were interviewed via live calls, and SMS. This survey was weighted to a likely general election voter universe.

### ABOUT THE FIRM

[Cygnal](#) is an award-winning international polling, public opinion, and predictive analytics firm that pioneered multi-mode polling, text-to-web collection, and emotive analysis. Cygnal consistently ranks as the most accurate firm, and clients rely on Cygnal's ability to create intelligence for action. Its team members have worked in all 50 states and multiple countries on more than 3,000 corporate, public affairs, and political campaigns.

