

**CYGNAL**

**Survey of Likely General Election Voters**

North Carolina Statewide

*Conducted March 6 – 7, 2024*

n=600 |  $\pm 3.99\%$

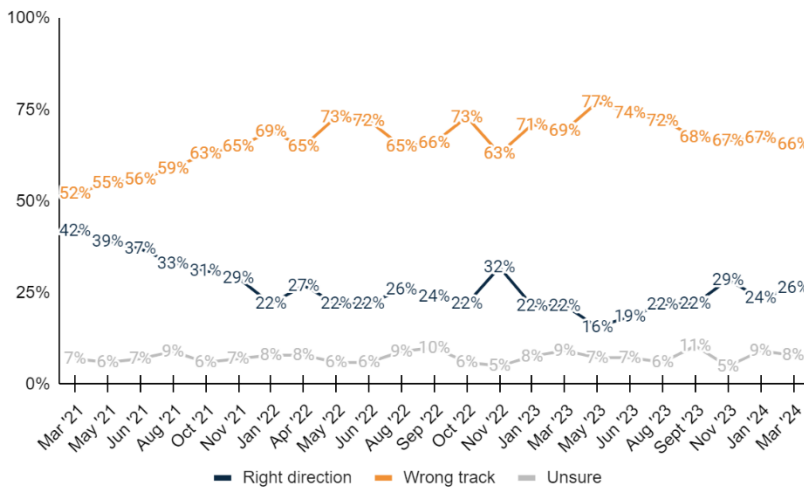
*Vote Method*

- How do you plan to vote in the November 2024 general election for President, Congress, and other statewide and local offices?

|  | Mar '24             | Jan '24             | Nov '23             | Sept '23            |
|--|---------------------|---------------------|---------------------|---------------------|
| <b><u>Vote in-person on Election Day</u></b> | <b><u>51.3%</u></b> | <b><u>46.5%</u></b> | <b><u>43.8%</u></b> | <b><u>41.6%</u></b> |
| Definitely vote in-person on Election Day    | 37.7%               | 31.9%               | 33.8%               | 30.1%               |
| Probably vote in-person on Election Day      | 13.6%               | 14.5%               | 10.0%               | 11.5%               |
| <b><u>Vote absentee by mail</u></b>          | <b><u>4.8%</u></b>  | <b><u>6.4%</u></b>  | <b><u>7.8%</u></b>  | <b><u>7.0%</u></b>  |
| Definitely vote absentee by mail             | 1.9%                | 3.3%                | 6.0%                | 2.6%                |
| Probably vote absentee by mail               | 2.9%                | 3.1%                | 1.8%                | 4.4%                |
| <b><u>Vote early in-person</u></b>           | <b><u>43.9%</u></b> | <b><u>47.1%</u></b> | <b><u>48.4%</u></b> | <b><u>51.4%</u></b> |
| Definitely vote early in-person              | 28.3%               | 25.1%               | 28.7%               | 25.9%               |
| Probably vote early in-person                | 15.6%               | 22.0%               | 19.7%               | 25.5%               |
| Total  | 100.0%              | 100.0%              | 100.0%              | 100.0%              |

*US Direction*

- Generally speaking, would you say things in the United States are headed in the right direction or off on the wrong track?



|                                | Mar '24             | Jan '24             | Nov '23             | Sept '23            |
|--------------------------------|---------------------|---------------------|---------------------|---------------------|
| <b><u>Right direction</u></b>  | <b><u>26.4%</u></b> | <b><u>23.5%</u></b> | <b><u>28.5%</u></b> | <b><u>22.0%</u></b> |
| Definitely the right direction | 6.6%                | 4.6%                | 7.5%                | 4.2%                |
| Mostly the right direction     | 19.8%               | 18.9%               | 21.0%               | 17.8%               |
| <b><u>Wrong track</u></b>      | <b><u>65.6%</u></b> | <b><u>67.3%</u></b> | <b><u>66.6%</u></b> | <b><u>67.5%</u></b> |
| Mostly the wrong track         | 12.9%               | 19.0%               | 14.6%               | 16.1%               |
| Definitely the wrong track     | 52.7%               | 48.3%               | 51.9%               | 51.4%               |
| Unsure                         | 7.9%                | 9.1%                | 4.9%                | 10.5%               |
| Total                          | 100.0%              | 100.0%              | 100.0%              | 100.0%              |



*Top Priority Federal General*

3. Which of the following issues was most important to you as you casted votes in the primary election?

|                                    | <b>Freq.</b> | <b>%</b> |
|------------------------------------|--------------|----------|
| Immigration                        | 150          | 25.0%    |
| The economy                        | 107          | 17.8%    |
| Abortion                           | 76           | 12.7%    |
| Inflation                          | 57           | 9.5%     |
| Taxes and spending                 | 40           | 6.7%     |
| Public safety                      | 29           | 4.8%     |
| Education                          | 26           | 4.4%     |
| Energy and the environment         | 19           | 3.1%     |
| Unsure                             | 31           | 5.2%     |
| I did not vote in the 2024 primary | 65           | 10.9%    |
| Total                              | 600          | 100.0%   |

*General Election Candidates Satisfaction*

4. Now that the primary is over, how satisfied are you with the choices for the general election?

|                            | <b>Freq.</b>      | <b>%</b>            |
|----------------------------|-------------------|---------------------|
| <b><u>Satisfied</u></b>    | <b><u>358</u></b> | <b><u>59.7%</u></b> |
| Completely satisfied       | 150               | 25.0%               |
| Somewhat satisfied         | 208               | 34.6%               |
| <b><u>Dissatisfied</u></b> | <b><u>182</u></b> | <b><u>30.4%</u></b> |
| Somewhat dissatisfied      | 90                | 15.0%               |
| Completely dissatisfied    | 92                | 15.3%               |
| Unsure                     | 60                | 9.9%                |
| Total                      | 600               | 100.0%              |

---

*Photo ID*

5. Did you have a photo ID for the 2024 primary election?

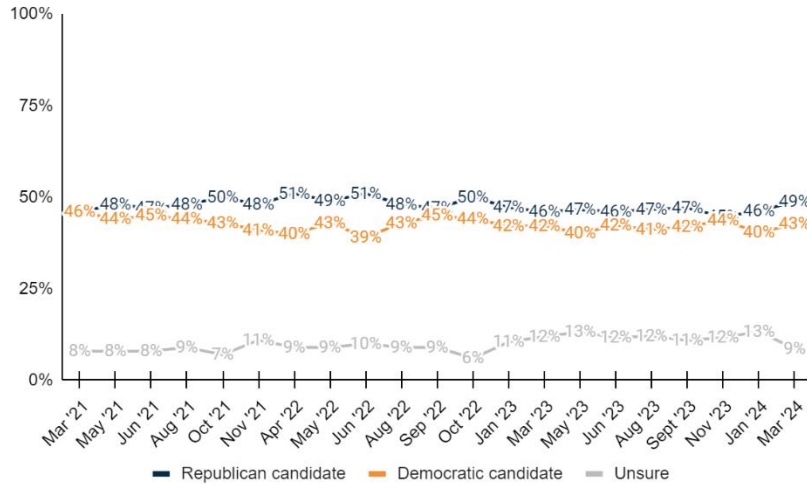
|   | <b>Freq.</b> | <b>%</b> |
|---|--------------|----------|
| Yes   | 515          | 85.8%    |
| No  | 14           | 2.3%     |
| I did not vote in the 2024 primary election | 71           | 11.9%    |
| Total                                       | 600          | 100.0%   |

---



Generic State Leg Ballot

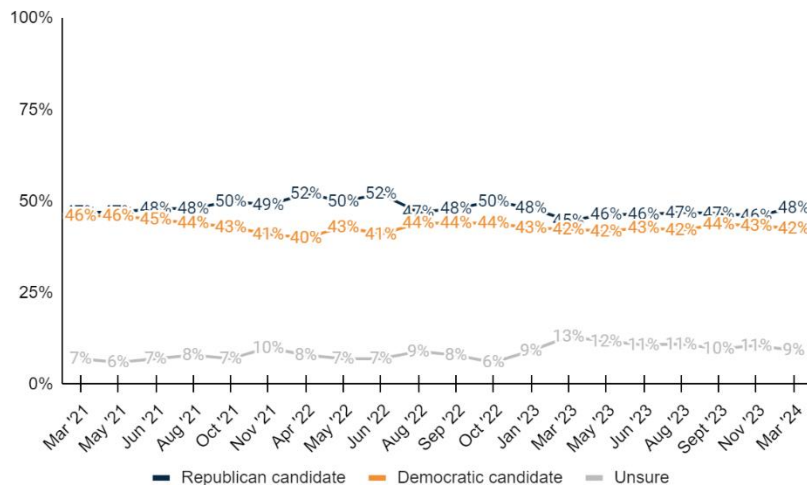
6. If the 2024 general election for the North Carolina State Legislature were held today, would you vote for the Republican candidate or the Democratic candidate?



|                                     | Mar '24      | Jan '24      | Nov '23      | Sept '23     |
|-------------------------------------|--------------|--------------|--------------|--------------|
| <b>Republican candidate</b>         | <b>48.7%</b> | <b>46.3%</b> | <b>44.7%</b> | <b>47.1%</b> |
| Definitely the Republican candidate | 41.5%        | 34.7%        | 35.7%        | 39.0%        |
| Probably the Republican candidate   | 7.2%         | 11.6%        | 9.0%         | 8.2%         |
| <b>Democratic candidate</b>         | <b>42.6%</b> | <b>40.4%</b> | <b>43.6%</b> | <b>42.0%</b> |
| Probably the Democratic candidate   | 7.1%         | 9.0%         | 9.0%         | 9.9%         |
| Definitely the Democratic candidate | 35.5%        | 31.4%        | 34.7%        | 32.1%        |
| Unsure                              | 8.6%         | 13.3%        | 11.7%        | 10.9%        |
| Total                               | 100.0%       | 100.0%       | 100.0%       | 100.0%       |

Generic Congressional Ballot

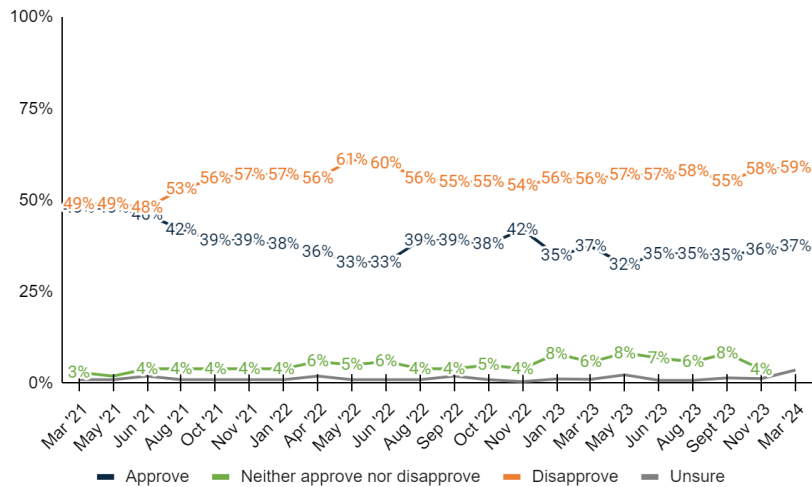
7. And, regardless of how you would vote at the state level, if the 2024 election for United States Congress was held today, and you had to make a choice, would you vote for the Republican candidate or the Democratic candidate?



|                                     | Mar '24      | Jan '24 | Nov '23      | Sept '23     |
|-------------------------------------|--------------|---------|--------------|--------------|
| <b>Republican candidate</b>         | <b>48.3%</b> | -       | <b>46.0%</b> | <b>46.7%</b> |
| Definitely the Republican candidate | 42.0%        | -       | 37.4%        | 37.9%        |
| Probably the Republican candidate   | 6.2%         | -       | 8.6%         | 8.8%         |
| <b>Democratic candidate</b>         | <b>42.5%</b> | -       | <b>43.4%</b> | <b>43.7%</b> |
| Probably the Democratic candidate   | 7.6%         | -       | 7.4%         | 8.9%         |
| Definitely the Democratic candidate | 34.8%        | -       | 36.0%        | 34.7%        |
| Unsure                              | 9.3%         | -       | 10.6%        | 9.7%         |
| Total                               | 100.0%       | -       | 100.0%       | 100.0%       |

*Biden Job Approval*

8. Do you approve or disapprove of the job that Joe Biden is doing as President?

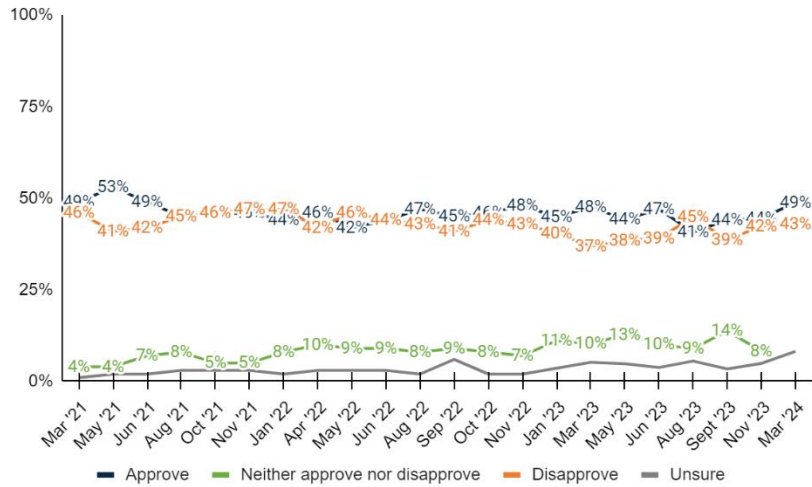


|                                       | Mar '24      | Jan '24 | Nov '23      | Sept '23     |
|---------------------------------------|--------------|---------|--------------|--------------|
| <b>Approve</b>                        | <b>37.5%</b> | -       | <b>36.4%</b> | <b>35.0%</b> |
| Strongly approve                      | 18.7%        | -       | 21.5%        | 15.4%        |
| Somewhat approve                      | 18.7%        | -       | 14.9%        | 19.6%        |
| <b>Neither approve nor disapprove</b> | -            | -       | <b>3.8%</b>  | <b>8.2%</b>  |
| <b>Disapprove</b>                     | <b>58.9%</b> | -       | <b>58.5%</b> | <b>55.3%</b> |
| Somewhat disapprove                   | 8.1%         | -       | 7.1%         | 7.0%         |
| Strongly disapprove                   | 50.8%        | -       | 51.4%        | 48.3%        |
| Unsure                                | 3.6%         | -       | 1.3%         | 1.5%         |
| Total                                 | 100.0%       | -       | 100.0%       | 100.0%       |



Cooper Job Approval

9. Do you approve or disapprove of the job that Roy Cooper is doing as Governor?



|                                       | Mar '24      | Jan '24  | Nov '23      | Sept '23     |
|---------------------------------------|--------------|----------|--------------|--------------|
| <b>Approve</b>                        | <b>48.9%</b> | -        | <b>44.4%</b> | <b>44.1%</b> |
| Strongly approve                      | 28.1%        | -        | 29.4%        | 26.6%        |
| Somewhat approve                      | 20.8%        | -        | 15.1%        | 17.5%        |
| <b>Neither approve nor disapprove</b> | <b>-</b>     | <b>-</b> | <b>8.3%</b>  | <b>13.8%</b> |
| <b>Disapprove</b>                     | <b>42.9%</b> | -        | <b>42.4%</b> | <b>38.6%</b> |
| Somewhat disapprove                   | 14.2%        | -        | 13.6%        | 13.6%        |
| Strongly disapprove                   | 28.7%        | -        | 28.8%        | 25.0%        |
| Unsure                                | 8.2%         | -        | 4.9%         | 3.4%         |
| Total                                 | 100.0%       | -        | 100.0%       | 100.0%       |

Presidential Ballot

10. If the November 5th general election for President was held today, and you had to make a choice based on these options, who would you vote for out of the following options?

|                                    | Freq.      | %            |
|------------------------------------|------------|--------------|
| <b>Republican Donald Trump</b>     | <b>271</b> | <b>45.2%</b> |
| Definitely Republican Donald Trump | 246        | 41.1%        |
| Probably Republican Donald Trump   | 25         | 4.2%         |
| <b>Democrat Joe Biden</b>          | <b>239</b> | <b>39.8%</b> |
| Definitely Democrat Joe Biden      | 199        | 33.2%        |
| Probably Democrat Joe Biden        | 40         | 6.6%         |
| Someone else                       | 57         | 9.4%         |
| Undecided                          | 33         | 5.5%         |
| Total                              | 600        | 100.0%       |



*Gubernatorial Ballot*

11. If the 2024 election for North Carolina Governor was held today, and you had to make a choice, who would you vote for out of the following options?

|  | <b>Freq.</b>      | <b>%</b>            |
|--|-------------------|---------------------|
| <b><u>Republican Mark Robinson</u></b> | <b><u>263</u></b> | <b><u>43.8%</u></b> |
| Definitely Republican Mark Robinson    | 213               | 35.4%               |
| Probably Republican Mark Robinson      | 50                | 8.4%                |
| <b><u>Democrat Josh Stein</u></b>      | <b><u>234</u></b> | <b><u>39.0%</u></b> |
| Definitely Democrat Josh Stein         | 195               | 32.6%               |
| Probably Democrat Josh Stein           | 39                | 6.4%                |
| <b><u>Green Party Wayne Turner</u></b> | <b><u>4</u></b>   | <b><u>0.6%</u></b>  |
| Definitely Green Party Wayne Turner    | 2                 | 0.3%                |
| Probably Green Party Wayne Turner      | 2                 | 0.3%                |
| <b><u>Libertarian Mike Ross</u></b>    | <b><u>11</u></b>  | <b><u>1.8%</u></b>  |
| Definitely Libertarian Mike Ross       | 4                 | 0.6%                |
| Probably Libertarian Mike Ross         | 7                 | 1.1%                |
| Undecided                              | 89                | 14.8%               |
| Total                                  | 600               | 100.0%              |

*AG Ballot*

12. If the 2024 election for North Carolina Attorney General was held today, and you had to make a choice, who would you vote for out of the following options?

|                                     | <b>Freq.</b>      | <b>%</b>            |
|-------------------------------------|-------------------|---------------------|
| <b><u>Republican Dan Bishop</u></b> | <b><u>244</u></b> | <b><u>40.6%</u></b> |
| Definitely Republican Dan Bishop    | 194               | 32.4%               |
| Probably Republican Dan Bishop      | 49                | 8.2%                |
| <b><u>Democrat Jeff Jackson</u></b> | <b><u>231</u></b> | <b><u>38.5%</u></b> |
| Definitely Democrat Jeff Jackson    | 185               | 30.9%               |
| Probably Democrat Jeff Jackson      | 46                | 7.7%                |
| Undecided                           | 125               | 20.8%               |
| Total                               | 600               | 100.0%              |

*Supreme Court Justice Ballot*

13. If the 2024 election for North Carolina Supreme Court Justice was held today, and you had to make a choice, who would you vote for out of the following options?

|  | <b>Freq.</b>      | <b>%</b>            |
|--|-------------------|---------------------|
| <b><u>Republican Jefferson Griffin</u></b> | <b><u>248</u></b> | <b><u>41.4%</u></b> |
| Definitely Republican Jefferson Griffin    | 192               | 32.0%               |
| Probably Republican Jefferson Griffin      | 56                | 9.3%                |



|                                      |                   |                     |
|--------------------------------------|-------------------|---------------------|
| <b><u>Democrat Allison Riggs</u></b> | <b><u>236</u></b> | <b><u>39.4%</u></b> |
| Definitely Democrat Allison Riggs    | 199               | 33.1%               |
| Probably Democrat Allison Riggs      | 38                | 6.3%                |
| Undecided                            | 116               | 19.3%               |
| Total                                | 600               | 100.0%              |

*Labor Commissioner Ballot*

14. If the 2024 election for North Carolina Labor Commissioner was held today, and you had to make a choice, who would you vote for out of the following options?

|  | <b>Freq.</b>      | <b>%</b>            |
|--|-------------------|---------------------|
| <b><u>Republican Luke Farley</u></b>   | <b><u>250</u></b> | <b><u>41.7%</u></b> |
| Definitely Republican Luke Farley      | 197               | 32.9%               |
| Probably Republican Luke Farley        | 53                | 8.8%                |
| <b><u>Democrat Braxton Winston</u></b> | <b><u>210</u></b> | <b><u>35.0%</u></b> |
| Definitely Democrat Braxton Winston    | 173               | 28.8%               |
| Probably Democrat Braxton Winston      | 37                | 6.2%                |
| Undecided                              | 140               | 23.3%               |
| Total                                  | 600               | 100.0%              |

*State Treasurer Ballot*

15. If the 2024 election for North Carolina State Treasurer was held today, and you had to make a choice, who would you vote for out of the following options?

|                                      | <b>Freq.</b>      | <b>%</b>            |
|--------------------------------------|-------------------|---------------------|
| <b><u>Republican Brad Briner</u></b> | <b><u>257</u></b> | <b><u>42.8%</u></b> |
| Definitely Republican Brad Briner    | 198               | 33.0%               |
| Probably Republican Brad Briner      | 59                | 9.8%                |
| <b><u>Democrat Wesley Harris</u></b> | <b><u>225</u></b> | <b><u>37.4%</u></b> |
| Definitely Democrat Wesley Harris    | 177               | 29.5%               |
| Probably Democrat Wesley Harris      | 48                | 7.9%                |
| Undecided                            | 118               | 19.7%               |
| Total                                | 600               | 100.0%              |

*Insurance Commissioner Ballot*

16. If the 2024 election for North Carolina Insurance Commissioner was held today, and you had to make a choice, who would you vote for out of the following options?

|                                      | <b>Freq.</b>      | <b>%</b>            |
|--------------------------------------|-------------------|---------------------|
| <b><u>Republican Mike Causey</u></b> | <b><u>260</u></b> | <b><u>43.4%</u></b> |
| Definitely Republican Mike Causey    | 211               | 35.2%               |
| Probably Republican Mike Causey      | 49                | 8.2%                |





|                                       |                   |                     |
|---------------------------------------|-------------------|---------------------|
| <b><u>Democrat Natasha Marcus</u></b> | <b><u>220</u></b> | <b><u>36.7%</u></b> |
| Definitely Democrat Natasha Marcus    | 178               | 29.7%               |
| Probably Democrat Natasha Marcus      | 42                | 7.0%                |
| Undecided                             | 120               | 19.9%               |
| Total                                 | 600               | 100.0%              |

*Superintendent of Public Instruction Ballot*

17. If the 2024 election for North Carolina Superintendent of Public Instruction was held today, and you had to make a choice, who would you vote for out of the following options?

|   | <b>Freq.</b>      | <b>%</b>            |
|---|-------------------|---------------------|
| <b><u>Republican Michele Morrow</u></b>   | <b><u>245</u></b> | <b><u>40.8%</u></b> |
| Definitely Republican Michele Morrow      | 202               | 33.7%               |
| Probably Republican Michele Morrow        | 43                | 7.1%                |
| <b><u>Democrat Maurice "Mo" Green</u></b> | <b><u>235</u></b> | <b><u>39.1%</u></b> |
| Definitely Democrat Maurice "Mo" Green    | 184               | 30.7%               |
| Probably Democrat Maurice "Mo" Green      | 51                | 8.4%                |
| Undecided                                 | 121               | 20.1%               |
| Total                                     | 600               | 100.0%              |

18. Are you female or male?

|        | <b>Freq.</b> | <b>%</b> |
|--------|--------------|----------|
| Female | 329          | 54.9%    |
| Male   | 271          | 45.1%    |
| Total  | 600          | 100.0%   |

19. What age range do you fall within?

|                           | <b>Freq.</b>      | <b>%</b>            |
|---------------------------|-------------------|---------------------|
| <b><u>Under 50</u></b>    | <b><u>257</u></b> | <b><u>42.8%</u></b> |
| 18 - 34                   | 121               | 20.1%               |
| 35 - 49                   | 136               | 22.7%               |
| <b><u>50 and Over</u></b> | <b><u>343</u></b> | <b><u>57.2%</u></b> |
| 50 - 64                   | 165               | 27.5%               |
| 65+                       | 178               | 29.6%               |
| Total                     | 600               | 100.0%              |

20. How are you registered to vote in North Carolina? You may consider yourself of a different party, but what does your voter registration card show?

|            | <b>Freq.</b> | <b>%</b> |
|------------|--------------|----------|
| Republican | 191          | 31.9%    |
| Democrat   | 205          | 34.2%    |



|                          |     |        |
|--------------------------|-----|--------|
| Independent/Unaffiliated | 187 | 31.2%  |
| Other                    | 3   | 0.5%   |
| Unsure                   | 13  | 2.2%   |
| Total                    | 600 | 100.0% |

21. And thinking about your views toward politics and government, would you say you are...

|                            | Freq.             | %                   |
|----------------------------|-------------------|---------------------|
| <b><u>Conservative</u></b> | <b><u>254</u></b> | <b><u>42.3%</u></b> |
| Very conservative          | 137               | 22.9%               |
| Somewhat conservative      | 117               | 19.4%               |
| <b><u>Moderate</u></b>     | <b><u>192</u></b> | <b><u>32.0%</u></b> |
| <b><u>Liberal</u></b>      | <b><u>127</u></b> | <b><u>21.2%</u></b> |
| Somewhat liberal           | 73                | 12.2%               |
| Very liberal               | 54                | 9.0%                |
| Unsure                     | 27                | 4.5%                |
| Total                      | 600               | 100.0%              |

22. Do you consider the area where you live to be more rural, suburban, or urban?

|          | Freq. | %      |
|----------|-------|--------|
| Rural    | 264   | 44.0%  |
| Suburban | 252   | 42.0%  |
| Urban    | 84    | 14.0%  |
| Total    | 600   | 100.0% |

23. What annual household income range do you fall within out of the following options?

|                     | Freq. | %      |
|---------------------|-------|--------|
| Less than \$40,000  | 90    | 15.0%  |
| \$40,000 - \$69,999 | 123   | 20.5%  |
| \$70,000 - \$99,999 | 120   | 19.9%  |
| \$100,000 or more   | 218   | 36.3%  |
| Unsure              | 50    | 8.4%   |
| Total               | 600   | 100.0% |

24. Which of the following best describes your race or ethnicity?

|                           | Freq. | %      |
|---------------------------|-------|--------|
| White or Caucasian        | 419   | 69.8%  |
| Asian or Pacific Islander | 15    | 2.5%   |
| Black or African American | 129   | 21.5%  |
| Hispanic or Latino        | 10    | 1.6%   |
| Other                     | 16    | 2.6%   |
| Unsure                    | 12    | 2.0%   |
| Total                     | 600   | 100.0% |



25. Thinking back, who did you vote for in the 2020 election for President?

|                         | Freq. | %      |
|-------------------------|-------|--------|
| Republican Donald Trump | 283   | 47.1%  |
| Democrat Joe Biden      | 274   | 45.7%  |
| Another candidate       | 15    | 2.5%   |
| Did not vote in 2020    | 14    | 2.4%   |
| Unsure                  | 14    | 2.3%   |
| Total                   | 600   | 100.0% |

26. What's the highest level of education you have completed?

|  | Freq.             | %                   |
|--|-------------------|---------------------|
| <b><u>No College</u></b>                     | <b><u>327</u></b> | <b><u>54.5%</u></b> |
| Some high school                             | 6                 | 1.1%                |
| High school diploma/GED                      | 84                | 13.9%               |
| Technical Certification                      | 26                | 4.3%                |
| Some college or Associate's Degree           | 211               | 35.2%               |
| <b><u>At least College</u></b>               | <b><u>264</u></b> | <b><u>44.0%</u></b> |
| Four-year undergraduate or Bachelor's Degree | 148               | 24.7%               |
| Graduate degree or further                   | 116               | 19.4%               |
| Unsure                                       | 9                 | 1.5%                |
| Total  | 600               | 100.0%              |

27. General Election X of 4

|        | Freq. | %      |
|--------|-------|--------|
| 0 of 4 | 6     | 1.1%   |
| 1 of 4 | 107   | 17.9%  |
| 2 of 4 | 93    | 15.5%  |
| 3 of 4 | 112   | 18.6%  |
| 4 of 4 | 282   | 47.0%  |
| Total  | 600   | 100.0% |

28. Geo – Congressional District

|    | Freq. | %    |
|----|-------|------|
| 1  | 42    | 7.0% |
| 2  | 23    | 3.8% |
| 3  | 45    | 7.4% |
| 4  | 45    | 7.6% |
| 5  | 47    | 7.8% |
| 6  | 49    | 8.2% |
| 7  | 50    | 8.3% |
| 8  | 33    | 5.5% |
| 9  | 45    | 7.5% |
| 10 | 51    | 8.5% |



|       |     |        |
|-------|-----|--------|
| 11    | 47  | 7.9%   |
| 12    | 43  | 7.1%   |
| 13    | 49  | 8.2%   |
| 14    | 32  | 5.3%   |
| Total | 600 | 100.0% |

### 29. Geo - DMA

|   | Freq.      | %            |
|---|------------|--------------|
| <b><u>Charlotte/West</u></b>            | <b>215</b> | <b>35.8%</b> |
| Charlotte                               | 164        | 27.4%        |
| Greenvll-Spart-Ashevll-And              | 48         | 8.0%         |
| Chattanooga                             | 2          | 0.3%         |
| Atlanta dma                             | 1          | 0.1%         |
| <b><u>Central</u></b>                   | <b>110</b> | <b>18.3%</b> |
| Greensboro-H.Point-W.Salem              | 103        | 17.1%        |
| Myrtle Beach-Florence                   | 7          | 1.2%         |
| <b><u>Raleigh-Durham (Fayetvll)</u></b> | <b>188</b> | <b>31.3%</b> |
| <b><u>Coastal</u></b>                   | <b>87</b>  | <b>14.5%</b> |
| Greenville-N.Bern-Washngtn              | 43         | 7.1%         |
| Wilmington                              | 34         | 5.7%         |
| Norfolk-Portsmth-Newpt Nws              | 11         | 1.8%         |
| Total                                   | 600        | 100.0%       |

### 30. Age + Income

|                  | Freq. | %      |
|------------------|-------|--------|
| <65 <\$40k       | 55    | 9.1%   |
| <65 \$70k-\$100k | 82    | 13.6%  |
| <65 \$40k-\$70k  | 78    | 13.0%  |
| <65 \$100k+      | 179   | 29.9%  |
| 65+ <\$40k       | 35    | 5.9%   |
| 65+ \$70k-\$100k | 38    | 6.3%   |
| 65+ \$40k-\$70k  | 45    | 7.5%   |
| 65+ \$100k+      | 39    | 6.4%   |
| Unsure           | 50    | 8.4%   |
| Total            | 600   | 100.0% |

### 31. Age + Gender

|           | Freq. | %      |
|-----------|-------|--------|
| F 18 - 34 | 71    | 11.9%  |
| F 35 - 49 | 75    | 12.5%  |
| F 50 - 64 | 82    | 13.7%  |
| F 65+     | 100   | 16.7%  |
| M 18 - 34 | 49    | 8.2%   |
| M 35 - 49 | 61    | 10.2%  |
| M 50 - 64 | 83    | 13.8%  |
| M 65+     | 77    | 12.9%  |
| Total     | 600   | 100.0% |



### 32. Race + Gender

|                 | Freq. | %      |
|-----------------|-------|--------|
| White Female    | 231   | 38.5%  |
| White Male      | 188   | 31.3%  |
| Asian Female    | 8     | 1.3%   |
| Asian Male      | 7     | 1.1%   |
| Black Female    | 77    | 12.8%  |
| Black Male      | 52    | 8.7%   |
| Hispanic Female | 2     | 0.3%   |
| Hispanic Male   | 8     | 1.3%   |
| Other Female    | 8     | 1.3%   |
| Other Male      | 8     | 1.3%   |
| Unsure          | 12    | 2.0%   |
| Total           | 600   | 100.0% |

### 33. Education + Gender

|                         | Freq. | %      |
|-------------------------|-------|--------|
| Female At least College | 157   | 26.1%  |
| Female No degree        | 168   | 28.0%  |
| Male At least College   | 107   | 17.9%  |
| Male No degree          | 159   | 26.5%  |
| Unsure                  | 9     | 1.5%   |
| Total                   | 600   | 100.0% |

### 34. Partisanship + Age

|                       | Freq. | %      |
|-----------------------|-------|--------|
| Republican 18-34      | 35    | 5.8%   |
| Republican 35-49      | 40    | 6.6%   |
| Republican 50-64      | 54    | 9.0%   |
| Republican 65+        | 63    | 10.5%  |
| Democrat 18-34        | 37    | 6.2%   |
| Democrat 35-49        | 46    | 7.7%   |
| Democrat 50-64        | 61    | 10.2%  |
| Democrat 65+          | 61    | 10.2%  |
| Independent/UAF 18-34 | 44    | 7.3%   |
| Independent/UAF 35-49 | 49    | 8.2%   |
| Independent/UAF 50-64 | 41    | 6.9%   |
| Independent/UAF 65+   | 53    | 8.8%   |
| Other 18-34           | 0     | 0.0%   |
| Other 35-49           | 1     | 0.2%   |
| Other 50-64           | 2     | 0.3%   |
| Other 65+             | 0     | 0.0%   |
| Unsure                | 13    | 2.2%   |
| Total                 | 600   | 100.0% |



### 35. Partisanship + Gender

|                        | Freq. | %      |
|------------------------|-------|--------|
| Republican Female      | 105   | 17.5%  |
| Republican Male        | 86    | 14.3%  |
| Democrat Female        | 121   | 20.2%  |
| Democrat Male          | 84    | 14.0%  |
| Independent/UAF Female | 97    | 16.2%  |
| Independent/UAF Male   | 90    | 15.0%  |
| Other Female           | 0     | 0.0%   |
| Other Male             | 3     | 0.5%   |
| Unsure                 | 13    | 2.2%   |
| Total                  | 600   | 100.0% |

#### METHODOLOGY

This probabilistic survey was conducted March 6 – 7, 2024, with 600 likely general election voters. It has a margin of error of  $\pm 3.99\%$ . Known registered voters were interviewed via live phones and SMS. This survey was weighted to a likely general election voter universe.

#### ABOUT THE FIRM

[Cygnal](#) is an award-winning international polling, public opinion, and predictive analytics firm that pioneered multi-mode polling, text-to-web collection, and emotive analysis. Cygnal consistently ranks as the most accurate firm, and clients rely on Cygnal's ability to create intelligence for action. Its team members have worked in all 50 states and multiple countries on more than 3,000 corporate, public affairs, and political campaigns.

