

CYGNAL

Survey of Likely General Election Voters

North Carolina Statewide

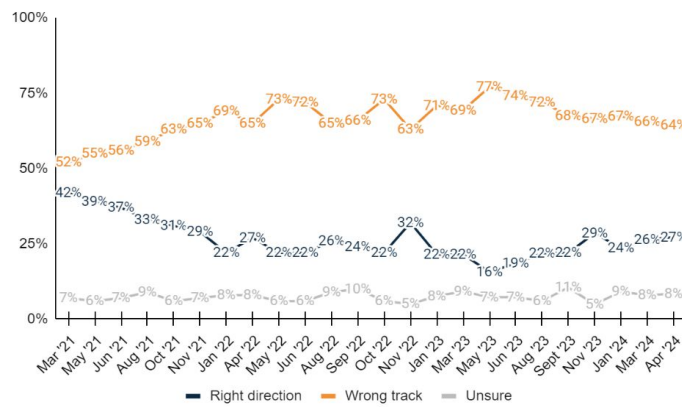
Conducted April 7 - 8, 2024

n=600 | $\pm 3.99\%$

Q1. Vote Method: How do you plan to vote in the 2024 general election for President, Congress, and state offices?

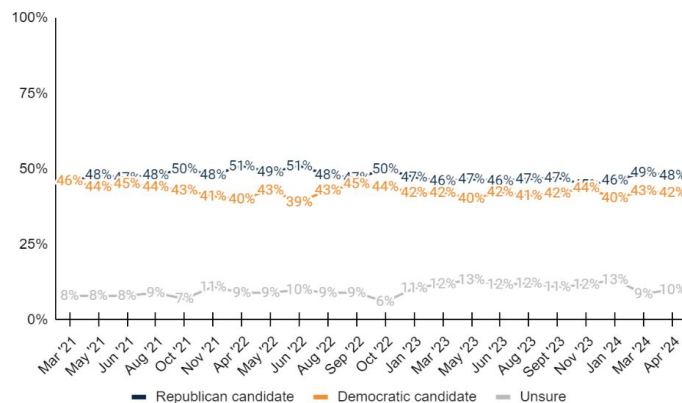
	Apr '24	Mar '24	Jan '24	Nov '23
Vote in-person on Election Day	46.2%	51.3%	46.5%	43.8%
Definitely vote in-person on Election Day	33.6%	37.7%	31.9%	33.8%
Probably vote in-person on Election Day	12.6%	13.6%	14.5%	10.0%
Vote absentee by mail	5.9%	4.8%	6.4%	7.8%
Definitely vote absentee by mail	2.6%	1.9%	3.3%	6.0%
Probably vote absentee by mail	3.3%	2.9%	3.1%	1.8%
Vote early in-person	47.9%	43.9%	47.1%	48.4%
Definitely vote early in-person	25.2%	28.3%	25.1%	28.7%
Probably vote early in-person	22.8%	15.6%	22.0%	19.7%
Total	100.0%	100.0%	100.0%	100.0%

Q2. RD/WT: Generally speaking, would you say things in United States are headed in the right direction or off on the wrong track?



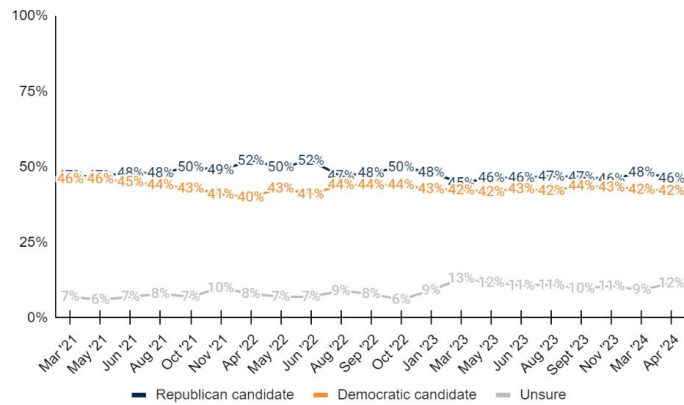
	Apr '24	Mar '24	Jan '24	Nov '23
Right direction	27.2%	26.4%	23.5%	28.5%
Definitely the right direction	5.7%	6.6%	4.6%	7.5%
Mostly the right direction	21.5%	19.8%	18.9%	21.0%
Wrong track	64.3%	65.6%	67.3%	66.6%
Mostly the wrong track	17.8%	12.9%	19.0%	14.6%
Definitely the wrong track	46.6%	52.7%	48.3%	51.9%
Unsure	8.5%	7.9%	9.1%	4.9%
Total	100.0%	100.0%	100.0%	100.0%

Q3. Generic State Leg Ballot: If the 2024 election was held today, and you had to make a choice, would you vote for the Republican or Democratic candidate for the North Carolina State Legislature?



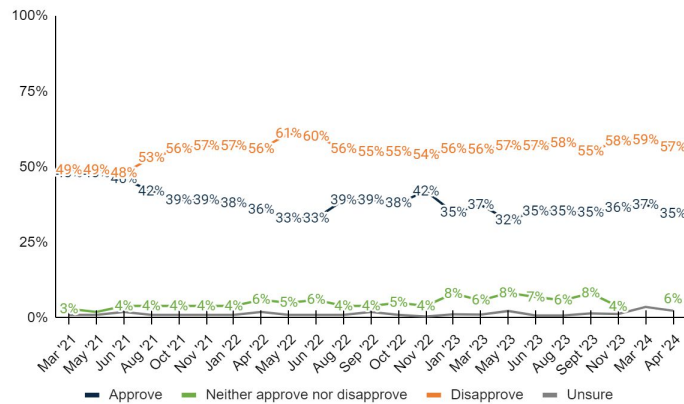
	Apr '24	Mar '24	Jan '24	Nov '23
<u>Republican candidate</u>	<u>47.8%</u>	<u>48.7%</u>	<u>46.3%</u>	<u>44.7%</u>
Definitely the Republican candidate	39.8%	41.5%	34.7%	35.7%
Probably the Republican candidate	8.1%	7.2%	11.6%	9.0%
<u>Democratic candidate</u>	<u>42.1%</u>	<u>42.6%</u>	<u>40.4%</u>	<u>43.6%</u>
Probably the Democratic candidate	7.7%	7.1%	9.0%	9.0%
Definitely the Democratic candidate	34.4%	35.5%	31.4%	34.7%
Unsure	10.1%	8.6%	13.3%	11.7%
Total	100.0%	100.0%	100.0%	100.0%

Q4. Generic Congress Ballot: And, regardless of how you would vote at the state level, if the 2024 election for United States Congress was held today, and you had to make a choice, would you vote for the Republican candidate or the Democratic candidate?



	Apr '24	Mar '24	Nov '23
<u>Republican candidate</u>	<u>46.3%</u>	<u>48.3%</u>	<u>46.0%</u>
Definitely the Republican candidate	37.6%	42.0%	37.4%
Probably the Republican candidate	8.6%	6.2%	8.6%
<u>Democratic candidate</u>	<u>42.2%</u>	<u>42.5%</u>	<u>43.4%</u>
Probably the Democratic candidate	7.7%	7.6%	7.4%
Definitely the Democratic candidate	34.4%	34.8%	36.0%
Unsure	11.6%	9.3%	10.6%
Total	100.0%	100.0%	100.0%

Q5. Biden Job Approval: Do you approve or disapprove of the job that Joe Biden is doing as President?

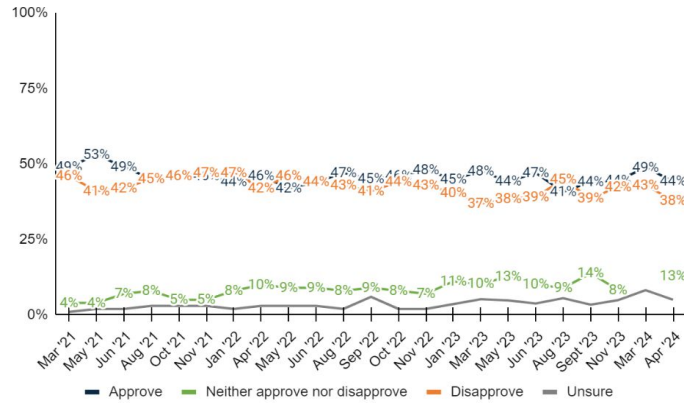


	Apr '24	Mar '24	Nov '23
<u>Approve</u>	<u>34.6%</u>	<u>37.5%</u>	<u>36.4%</u>
Strongly approve	18.0%	18.7%	21.5%
Somewhat approve	16.7%	18.7%	14.9%



<u>Neither approve nor disapprove</u>	<u>6.3%</u>	-	<u>3.8%</u>
<u>Disapprove</u>	<u>56.7%</u>	<u>58.9%</u>	<u>58.5%</u>
Somewhat disapprove	7.2%	8.1%	7.1%
Strongly disapprove	49.5%	50.8%	51.4%
Unsure	2.4%	3.6%	1.3%
Total	100.0%	100.0%	100.0%

Q6. Cooper Job Approval: Do you approve or disapprove of the job that Roy Cooper is doing as Governor?



	Apr '24	Mar '24	Nov '23
<u>Approve</u>	<u>44.2%</u>	<u>48.9%</u>	<u>44.4%</u>
Strongly approve	26.3%	28.1%	29.4%
Somewhat approve	17.9%	20.8%	15.1%
<u>Neither approve nor disapprove</u>	<u>12.8%</u>	-	<u>8.3%</u>
<u>Disapprove</u>	<u>37.9%</u>	<u>42.9%</u>	<u>42.4%</u>
Somewhat disapprove	13.3%	14.2%	13.6%
Strongly disapprove	24.6%	28.7%	28.8%
Unsure	5.0%	8.2%	4.9%
Total	100.0%	100.0%	100.0%

Q7. Presidential Ballot: Thinking now about the 2024 general election... If the 2024 general election for President was held today, and you had to make a choice based on these options, who would you vote for?

	Apr '24	Mar '24
<u>Republican Donald Trump</u>	<u>43.3%</u>	<u>45.2%</u>
Definitely Republican Donald Trump	35.3%	41.1%
Probably Republican Donald Trump	8.0%	4.2%
<u>Democrat Joe Biden</u>	<u>39.0%</u>	<u>39.8%</u>
Definitely Democrat Joe Biden	30.9%	33.2%
Probably Democrat Joe Biden	8.1%	6.6%
<u>Independent Robert F. Kennedy Jr.</u>	<u>7.3%</u>	-
Definitely Independent Robert F. Kennedy	2.3%	-
Probably Independent Robert F. Kennedy	5.0%	-
Someone else	4.5%	9.4%
Undecided	5.9%	5.5%
Total	100.0%	100.0%

Q8. Gubernatorial Ballot: If the North Carolina 2024 gubernatorial election was held today, who would you vote for out of the following options?

	Apr '24	Mar '24
<u>Republican Mark Robinson</u>	<u>39.9%</u>	<u>43.8%</u>



Definitely Republican Mark Robinson	31.4%	35.4%
Probably Republican Mark Robinson	8.5%	8.4%
<u>Democrat Josh Stein</u>	<u>37.9%</u>	<u>39.0%</u>
Definitely Democrat Josh Stein	29.9%	32.6%
Probably Democrat Josh Stein	8.0%	6.4%
<u>Green Party Wayne Turner</u>	<u>0.9%</u>	<u>0.6%</u>
Definitely Green Party Wayne Turner	0.0%	0.3%
Probably Green Party Wayne Turner	0.9%	0.3%
<u>Libertarian Mike Ross</u>	<u>3.0%</u>	<u>1.8%</u>
Definitely Libertarian Mike Ross	1.0%	0.6%
Probably Libertarian Mike Ross	2.1%	1.1%
Undecided	18.3%	14.8%
Total	100.0%	100.0%

Q9. Groceries Spending: Now thinking about other important issues... Compared to one year ago, how much are you spending on groceries?

	Freq.	%
I am spending more on groceries than one year ago	484	80.7%
I am spending less on groceries than one year ago	14	2.4%
I am spending about the same on groceries as one year ago	89	14.8%
Unsure	13	2.1%
Total	600	100.0%

Q10. Summer Travel Spending: Compared to one year ago, how will your spending on summer travel likely change?

	Freq.	%
My summer travel plans will not change from one year ago	202	33.7%
I plan to spend less on summer travel this year	260	43.3%
I plan to spend more on summer travel this year	92	15.3%
Unsure	46	7.7%
Total	600	100.0%

Q11. Sports Betting: Since sports betting launched in North Carolina in March of 2024, have you taken part in any of the sports betting activities or plan to in the future?

	Freq.	%
I have taken part in legal sports betting in North Carolina and plan to do so again	35	5.8%
I have taken part in legal sports betting in North Carolina and DO NOT plan to do so again	15	2.5%
I have not taken part in legal sports betting in North Carolina but plan to do so in the future	65	10.8%
I have not taken part in legal sports betting in North Carolina and DO NOT plan to do so in the future	467	77.8%
Unsure	19	3.1%
Total	600	100.0%



Q12. NC Scholarship Support Oppose: The North Carolina Opportunity Scholarship Program provides eligible students with state funded scholarships of up to \$7,200 that can be applied to tuition at a private school of their parents' choice. In the 2023-24 school year, about 32,100 students participated in this program. Do you support or oppose the Opportunity Scholarship Program?

	Freq.	%
<u>Support</u>	<u>362</u>	<u>60.4%</u>
Strongly support	230	38.4%
Somewhat support	132	22.0%
<u>Oppose</u>	<u>145</u>	<u>24.2%</u>
Somewhat oppose	62	10.3%
Strongly oppose	83	13.9%
Unsure	92	15.4%
Total	600	100.0%

Q13. NC Scholarship Additional Funding: This year, about 72,000 North Carolina families applied for a state-funded Opportunity Scholarship for students in grades K-12. While the money is distributed to families with the lowest incomes first, there is not enough money allocated by the North Carolina General Assembly to provide some level of scholarship for all applicants. Should lawmakers add more state funding to the Opportunity Scholarship Program in the upcoming legislative session?

	Freq.	%
Yes	249	41.4%
No, the General Assembly should maintain current funding	94	15.7%
No, I do not support the concept of Opportunity Scholarships	118	19.7%
Unsure	139	23.1%
Total	600	100.0%

Q14. NC State Leg Salary: North Carolina state legislators are paid \$13,951 annually for serving in the state's General Assembly, along with a daily allowance for each day they are in session. There is no limit on the amount of time they might spend in a legislative session. Knowing this, do you think they are paid enough?

	Freq.	%
Yes	342	57.1%
No	110	18.4%
Unsure	147	24.5%
Total	600	100.0%

Q15. NC Time in Session: If legislative pay remains at \$13,951 annually, which answer best describes your belief about the length of legislative sessions?

	Freq.	%
There should be a set limit on the number of days legislators spend in	307	51.2%
There should be no limit on the number of days legislators spend in session	158	26.4%
Unsure	135	22.4%
Total	600	100.0%

Q16. Increase Pay Support Oppose: Would you support or oppose legislation that increased the pay for lawmakers to \$25,000?

	Freq.	%
<u>Support</u>	<u>187</u>	<u>31.1%</u>
Strongly support	52	8.7%
Somewhat support	135	22.5%
<u>Oppose</u>	<u>291</u>	<u>48.5%</u>
Somewhat oppose	113	18.9%
Strongly oppose	178	29.6%



Unsure	122	20.4%
Total	600	100.0%

Q17. HOA Image: Overall, how do you feel about homeowners' associations (HOAs) in North Carolina? If you haven't heard of them, say so.

	Freq.	%
<u>Favorable</u>	<u>113</u>	<u>18.9%</u>
Very favorable	15	2.5%
Somewhat favorable	98	16.3%
<u>Unfavorable</u>	<u>368</u>	<u>61.3%</u>
Somewhat unfavorable	142	23.7%
Very unfavorable	226	37.6%
No opinion	79	13.2%
Never heard of	40	6.7%
Total	600	100.0%

Q18. HOA Disputes: Do you believe there should be more recourse options that do not involve costly legal actions for homeowners who have disputes with their homeowners' associations in North Carolina?

	Freq.	%
Yes	448	74.7%
No	27	4.6%
Unsure	124	20.7%
Total	600	100.0%

Q19. Student Phones: Do you believe students should be allowed to have smart phones in class?

	Freq.	%
Yes	143	23.9%
No	386	64.3%
Unsure	71	11.8%
Total	600	100.0%

Q20. Gender

	Freq.	%
Female	329	54.9%
Male	271	45.1%
Total	600	100.0%

Q21. Age Range

	Freq.	%
<u>Under 50</u>	<u>257</u>	<u>42.8%</u>
18 - 34	121	20.1%
35 - 49	136	22.7%
<u>50 and Over</u>	<u>343</u>	<u>57.2%</u>
50 - 64	165	27.5%
65 or older	178	29.6%
Total	600	100.0%

Q22. Partisanship by Registration

	Freq.	%
Republican	191	31.9%
Democrat	205	34.2%
Independent/Other	185	30.8%
Unsure	19	3.1%
Total	600	100.0%

Q23. Ideology

	Freq.	%
<u>Conservative</u>	<u>251</u>	<u>41.8%</u>
Very conservative	135	22.4%



Somewhat conservative	116	19.4%
<u>Moderate</u>	169	28.2%
<u>Liberal</u>	144	24.0%
Somewhat liberal	86	14.3%
Very liberal	58	9.7%
Unsure	36	6.0%
Total	600	100.0%

Q24. Urbanicity/Community Type

	Freq.	%
Rural	264	44.0%
Suburban	270	45.0%
Urban	66	11.0%
Total	600	100.0%

Q25. Income by Response

	Freq.	%
Less than \$40,000	106	17.7%
\$40,000 - \$69,999	129	21.4%
\$70,000 - \$99,999	117	19.5%
\$100,000 or more	214	35.7%
Unsure	34	5.7%
Total	600	100.0%

Q26. Race/Ethnicity

	Freq.	%
White or Caucasian	410	68.3%
Asian or Pacific Islander	8	1.4%
Black or African American	129	21.5%
Hispanic or Latino	19	3.2%
Other	21	3.5%
Unsure	13	2.2%
Total	600	100.0%

Q27. 2020 Retro Ballot

	Freq.	%
Republican Donald Trump	275	45.8%
Democrat Joe Biden	266	44.4%
Another candidate	16	2.7%
Did not vote in 2020	28	4.7%
Unsure	14	2.4%
Total	600	100.0%

Q28. Education Level

	Freq.	%
<u>No College</u>	332	55.3%
Some high school	7	1.2%
High school diploma/GED	70	11.6%
Technical Certification	27	4.5%
Some college or Associate's Degree	227	37.9%
<u>At least College</u>	264	44.0%
Four-year undergraduate or Bachelor's Degree	158	26.3%
Graduate degree or further	106	17.7%
Unsure	4	0.7%
Total	600	100.0%



Q29. General Election X of 4

	Freq.	%
0 of 4	39	6.4%
1 of 4	92	15.4%
2 of 4	107	17.9%
3 of 4	79	13.2%
4 of 4	282	47.0%
Total	600	100.0%

Q30. Geo

	Freq.	%
Charlotte/West	216	35.9%
Central	110	18.3%
Raleigh-Durham	188	31.3%
Coastal	87	14.5%
Total	600	100.0%

Q31. Geo - Congressional District

	Freq.	%
1	37	6.1%
2	19	3.2%
3	49	8.2%
4	60	10.0%
5	40	6.7%
6	42	7.0%
7	43	7.2%
8	40	6.7%
9	49	8.2%
10	59	9.8%
11	48	8.1%
12	34	5.7%
13	47	7.8%
14	32	5.4%
Total	600	100.0%

Q32. Geo - DMA

	Freq.	%
<u>Charlotte/West</u>	<u>216</u>	<u>35.9%</u>
Charlotte	164	27.4%
Greenville-Spart-Ashevl-And	49	8.1%
Chattanooga	2	0.3%
Atlanta	1	0.1%
<u>Central</u>	<u>110</u>	<u>18.3%</u>
Greensboro-H.Point-W.Salem	103	17.1%
Myrtle Beach-Florence	7	1.2%
<u>Raleigh-Durham (Fayetteville)</u>	<u>188</u>	<u>31.3%</u>
<u>Coastal</u>	<u>87</u>	<u>14.5%</u>
Greenville-N.Bern-Washngtn	42	7.1%
Wilmington	34	5.7%
Norfolk-Portsmth-Newpt Nws	11	1.8%
Total	600	100.0%

Q33. Age + Income

	Freq.	%
<65 <\$40k	73	12.1%
<65 \$40k-\$70k	83	13.9%
<65 \$70k-\$100k	78	13.0%
<65 \$100k+	176	29.3%
65+ <\$40k	34	5.6%



65+ \$40k-\$70k	45	7.5%
65+ \$70k-\$100k	39	6.6%
65+ \$100k+	38	6.3%
Unsure	34	5.7%
Total	600	100.0%

Q34. Gender + Age

	Freq.	%
F 18 - 34	60	10.0%
F 35 - 49	77	12.8%
F 50 - 64	88	14.6%
F 65+	105	17.5%
M 18 - 34	61	10.1%
M 35 - 49	60	10.0%
M 50 - 64	77	12.9%
M 65+	73	12.1%
Total	600	100.0%

Q35. Race + Gender

	Freq.	%
White Female	219	36.6%
White Male	190	31.7%
Asian Female	6	1.0%
Asian Male	2	0.4%
Black Female	83	13.8%
Black Male	46	7.7%
Hispanic Female	7	1.2%
Hispanic Male	12	1.9%
Other Female	10	1.6%
Other Male	11	1.9%
Unsure	13	2.2%
Total	600	100.0%

Q36. Gender + Education

	Freq.	%
Female At least College	158	26.3%
Female No degree	170	28.3%
Male At least College	107	17.8%
Male No degree	162	27.0%
Unsure	4	0.7%
Total	600	100.0%

Q37. Partisanship + Age

	Freq.	%
Republican 18-34	24	4.0%
Republican 35-49	45	7.6%
Republican 50-64	60	10.0%
Republican 65+	62	10.3%
Democrat 18-34	46	7.7%
Democrat 35-49	48	7.9%
Democrat 50-64	50	8.3%
Democrat 65+	61	10.2%
Independent/Other 18-34	44	7.3%
Independent/Other 35-49	40	6.7%
Independent/Other 50-64	50	8.4%
Independent/Other 65+	51	8.4%
Unsure	19	3.1%
Total	600	100.0%



Q38. Partisanship + Gender

	Freq.	%
Republican Female	98	16.3%
Republican Male	94	15.6%
Democrat Female	130	21.6%
Democrat Male	76	12.6%
Independent/Other Female	89	14.8%
Independent/Other Male	96	16.0%
Unsure	19	3.1%
Total	600	100.0%

METHODOLOGY

This probabilistic survey was conducted April 7 – 8, 2024, with 600 likely general election voters. It has a margin of error of $\pm 3.99\%$. Known registered voters were interviewed via live phones and SMS. This survey was weighted to a likely general election voter universe.

ABOUT THE FIRM

[Cygnal](#) is an award-winning international polling, public opinion, and predictive analytics firm that pioneered multi-mode polling, text-to-web collection, and emotive analysis. Cygnal consistently ranks as the most accurate firm, and clients rely on Cygnal's ability to create intelligence for action. Its team members have worked in all 50 states and multiple countries on more than 3,000 corporate, public affairs, and political campaigns.

