



CYGNAL

Survey of Likely General Election Voters

North Carolina Statewide

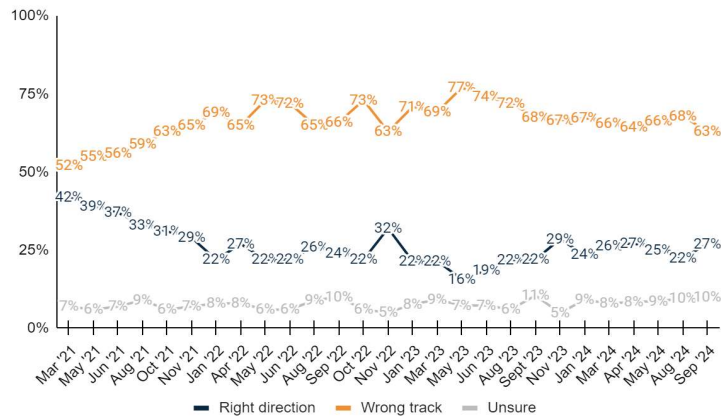
Conducted September 15 – 16, 2024

n=600 | $\pm 3.99\%$

Q1. Vote Method: How do you plan to vote in the 2024 general election for President, Congress, and state offices?

	Sep '24	Aug '24	May '24	Apr '24
<u>Vote in-person on Election Day</u>	<u>41.4%</u>	<u>48.5%</u>	<u>45.0%</u>	<u>46.2%</u>
Definitely vote in-person on Election Day	29.5%	37.1%	32.9%	33.6%
Probably vote in-person on Election Day	11.8%	11.4%	12.1%	12.6%
<u>Vote absentee by mail</u>	<u>5.0%</u>	<u>5.5%</u>	<u>5.6%</u>	<u>5.9%</u>
Definitely vote absentee by mail	4.4%	3.9%	2.9%	2.6%
Probably vote absentee by mail	0.6%	1.5%	2.7%	3.3%
<u>Vote early in-person</u>	<u>53.6%</u>	<u>46.0%</u>	<u>49.4%</u>	<u>47.9%</u>
Definitely vote early in-person	29.2%	25.4%	28.9%	25.2%
Probably vote early in-person	24.4%	20.6%	20.5%	22.8%
Total	100.0%	100.0%	100.0%	100.0%

Q2. National RD/WT: Generally speaking, would you say things in the United States are headed in the right direction or off on the wrong track?



	Sep '24	Aug '24	May '24	Apr '24
<u>Right direction</u>	<u>27.0%</u>	<u>22.5%</u>	<u>24.9%</u>	<u>27.2%</u>
Definitely the right direction	5.9%	6.2%	7.0%	5.7%
Mostly the right direction	21.1%	16.3%	17.9%	21.5%
<u>Wrong track</u>	<u>63.0%</u>	<u>67.9%</u>	<u>66.4%</u>	<u>64.3%</u>
Mostly the wrong track	15.7%	19.7%	18.4%	17.8%
Definitely the wrong track	47.2%	48.2%	48.0%	46.6%
Unsure	10.0%	9.6%	8.7%	8.5%
Total	100.0%	100.0%	100.0%	100.0%

Q3. North Carolina RD/WT: Generally speaking, would you say things in North Carolina are headed in the right direction or off on the wrong track?

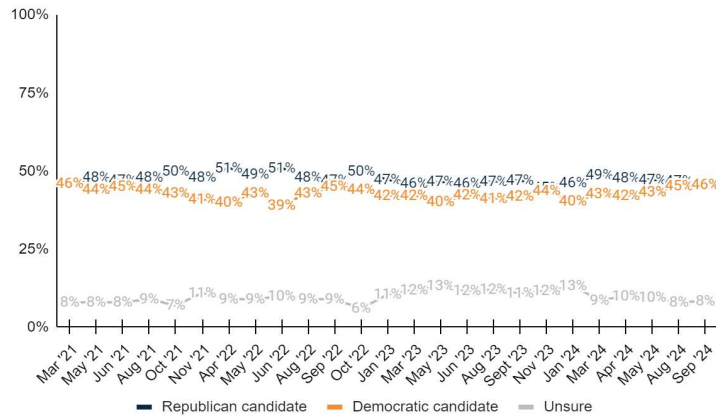
	Sep '24	Aug '24	May '24
<u>Right direction</u>	<u>32.9%</u>	<u>33.8%</u>	<u>34.5%</u>
Definitely the right direction	5.3%	5.8%	7.0%
Mostly the right direction	27.5%	27.9%	27.6%
<u>Wrong track</u>	<u>52.6%</u>	<u>52.6%</u>	<u>50.1%</u>
Mostly the wrong track	25.3%	27.8%	27.9%
Definitely the wrong track	27.3%	24.8%	22.3%
Unsure	14.5%	13.6%	15.3%
Total	100.0%	100.0%	100.0%



Q4. Top Issue: When it comes to each of the following issues, which is the most important issue in the 2024 election?

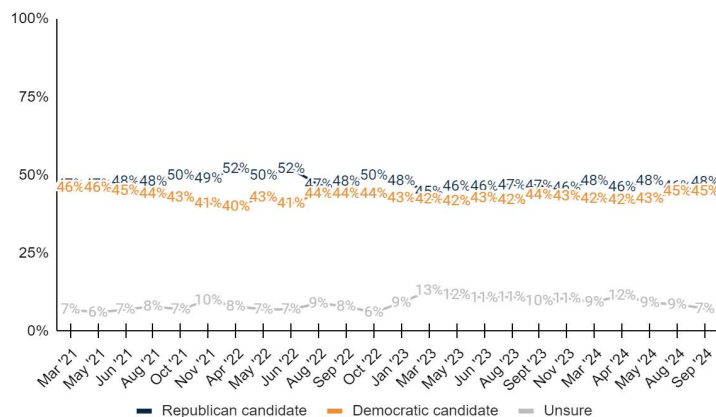
	Freq.	%
Inflation/Prices	179	29.8%
Immigration	95	15.9%
Jobs/Economy	95	15.8%
Abortion	94	15.6%
Education	40	6.6%
Taxes/Spending	39	6.4%
Crime/Public safety	17	2.9%
Energy/Environment	16	2.6%
Unsure	26	4.3%
Total	600	100.0%

Q5. Generic State Leg Ballot: If the 2024 election was held today, and you had to make a choice, would you vote for the Republican or Democratic candidate for the North Carolina State Legislature?



	Sep '24	Aug '24	May '24	Apr '24
<u>Republican candidate</u>	<u>46.0%</u>	<u>46.7%</u>	<u>47.2%</u>	<u>47.8%</u>
Definitely the Republican candidate	39.7%	39.3%	39.0%	39.8%
Probably the Republican candidate	6.3%	7.4%	8.2%	8.1%
<u>Democratic candidate</u>	<u>45.6%</u>	<u>45.3%</u>	<u>43.2%</u>	<u>42.1%</u>
Probably the Democratic candidate	6.7%	6.6%	8.7%	7.7%
Definitely the Democratic candidate	38.9%	38.7%	34.5%	34.4%
Unsure	8.4%	8.0%	9.5%	10.1%
Total	100.0%	100.0%	100.0%	100.0%

Q6. Generic Congress Ballot: And, regardless of how you would vote at the state level, if the 2024 election for United States Congress was held today, and you had to make a choice, would you vote for the Republican candidate or the Democratic candidate?



	Sep '24	Aug '24	May '24	Apr '24
<u>Republican candidate</u>	<u>47.9%</u>	<u>46.5%</u>	<u>48.3%</u>	<u>46.3%</u>
Definitely the Republican candidate	40.4%	38.1%	37.4%	37.6%
Probably the Republican candidate	7.5%	8.3%	10.8%	8.6%
<u>Democratic candidate</u>	<u>44.8%</u>	<u>44.9%</u>	<u>42.6%</u>	<u>42.2%</u>
Probably the Democratic candidate	7.9%	7.2%	9.5%	7.7%
Definitely the Democratic candidate	36.9%	37.7%	33.1%	34.4%
Unsure	7.3%	8.6%	9.1%	11.6%
Total	100.0%	100.0%	100.0%	100.0%

Q7. Presidential Ballot: Thinking now about the 2024 general election... If the 2024 general election for President was held today, and you had to make a choice based on these options, who would you vote for?
Note: Prior to August 4, 2024, Joe Biden was the Democratic candidate offered on this question instead of Kamala Harris.

	Sep '24	Aug '24	May '24	Apr '24
<u>Republican Donald Trump</u>	<u>45.6%</u>	<u>47.2%</u>	<u>42.6%</u>	<u>43.3%</u>
Definitely Republican Donald Trump	43.1%	41.9%	35.5%	35.3%
Probably Republican Donald Trump	2.5%	5.3%	7.1%	8.0%
<u>Democrat Kamala Harris</u>	<u>45.3%</u>	<u>44.1%</u>	<u>38.1%</u>	<u>39.0%</u>
Definitely Democrat Kamala Harris	38.7%	38.5%	30.9%	30.9%
Probably Democrat Kamala Harris	6.6%	5.6%	7.2%	8.1%
<u>Libertarian Chase Oliver</u>	<u>0.9%</u>	<u>0.6%</u>	-	-
Definitely Libertarian Chase Oliver	0.4%	0.4%	-	-
Probably Libertarian Chase Oliver	0.5%	0.2%	-	-
<u>Constitution Party Randall Terry</u>	<u>0.2%</u>	<u>0.0%</u>	-	-
Definitely Constitution Party Randall Terry	0.0%	0.0%	-	-
Probably Constitution Party Randall Terry	0.2%	0.0%	-	-
<u>Green Party Jill Stein</u>	<u>0.4%</u>	<u>0.4%</u>	-	-
Definitely Green Party Jill Stein	0.4%	0.0%	-	-
Probably Green Party Jill Stein	0.0%	0.4%	-	-
<u>Justice for All Party Cornel West</u>	<u>1.6%</u>	-	-	-
Definitely Justice for All Party Cornel West	0.3%	-	-	-
Probably Justice for All Party Cornel West	1.4%	-	-	-
Undecided	6.0%	4.1%	6.3%	5.9%
Total	100.0%	100.0%	100.0%	100.0%

Q8. Gubernatorial Ballot: If the North Carolina 2024 gubernatorial election was held today, who would you vote for out of the following options?

	Sep '24	Aug '24	May '24	Apr '24
<u>Republican Mark Robinson</u>	<u>39.2%</u>	<u>38.2%</u>	<u>39.2%</u>	<u>39.9%</u>
Definitely Republican Mark Robinson	32.2%	30.9%	31.3%	31.4%
Probably Republican Mark Robinson	7.0%	7.4%	7.9%	8.5%
<u>Democrat Josh Stein</u>	<u>45.5%</u>	<u>42.6%</u>	<u>39.1%</u>	<u>37.9%</u>
Definitely Democrat Josh Stein	36.1%	35.2%	28.8%	29.9%
Probably Democrat Josh Stein	9.4%	7.5%	10.3%	8.0%
<u>Green Party Wayne Turner</u>	<u>0.3%</u>	<u>0.7%</u>	<u>0.8%</u>	<u>0.9%</u>



Definitely Green Party Wayne Turner	0.2%	0.7%	0.3%	0.0%
Probably Green Party Wayne Turner	0.2%	0.1%	0.6%	0.9%
<u>Libertarian Mike Ross</u>	<u>2.4%</u>	<u>3.4%</u>	<u>3.7%</u>	<u>3.0%</u>
Definitely Libertarian Mike Ross	1.3%	0.9%	1.6%	1.0%
Probably Libertarian Mike Ross	1.1%	2.6%	2.1%	2.1%
<u>Constitution Party Vinny Smith</u>	<u>0.2%</u>	-	-	-
Definitely Constitution Party Vinny Smith	0.2%	-	-	-
Probably Constitution Party Vinny Smith	0.0%	-	-	-
Undecided	12.5%	14.9%	17.1%	18.3%
Total	100.0%	100.0%	100.0%	100.0%

Q9. LG Ballot: If the 2024 election for North Carolina Lieutenant Governor were held today, and you had to make a choice, who would you vote for out of the following options?

	Sep '24	Aug '24
<u>Republican Hal Weatherman</u>	<u>40.1%</u>	<u>37.8%</u>
Definitely Republican Hal Weatherman	32.3%	26.9%
Probably Republican Hal Weatherman	7.8%	10.9%
<u>Democrat Rachel Hunt</u>	<u>41.6%</u>	<u>35.9%</u>
Definitely Democrat Rachel Hunt	30.6%	28.4%
Probably Democrat Rachel Hunt	11.0%	7.5%
<u>Libertarian Shannon Bray</u>	<u>1.7%</u>	<u>4.6%</u>
Definitely Libertarian Shannon Bray	0.5%	1.7%
Probably Libertarian Shannon Bray	1.3%	2.9%
<u>Constitution Party Wayne Jones</u>	<u>1.2%</u>	-
Definitely Constitution Party Wayne Jones	0.5%	-
Probably Constitution Party Wayne Jones	0.6%	-
Undecided	15.4%	21.8%
Total	100.0%	100.0%

Q10. Attorney General Ballot: If the 2024 election for North Carolina Attorney General were held today, and you had to make a choice, who would you vote for out of the following options?

	Sep '24	Aug '24	Mar '24
<u>Republican Dan Bishop</u>	<u>43.1%</u>	<u>41.7%</u>	<u>40.6%</u>
Definitely Republican Dan Bishop	33.1%	27.5%	32.4%
Probably Republican Dan Bishop	10.1%	14.2%	8.2%
<u>Democrat Jeff Jackson</u>	<u>44.6%</u>	<u>37.8%</u>	<u>38.5%</u>
Probably Democrat Jeff Jackson	12.8%	7.1%	7.7%
Definitely Democrat Jeff Jackson	31.8%	30.8%	30.9%
Undecided	12.3%	20.5%	20.8%
Total	100.0%	100.0%	100.0%

Q11. Labor Commissioner Ballot: If the 2024 election for North Carolina Labor Commissioner were held today, and you had to make a choice, who would you vote for out of the following options?

	Sep '24	Aug '24	Mar '24
<u>Republican Luke Farley</u>	<u>40.9%</u>	<u>39.5%</u>	<u>41.7%</u>
Definitely Republican Luke Farley	31.3%	24.3%	32.9%
Probably Republican Luke Farley	9.6%	15.2%	8.8%
<u>Democrat Braxton Winston II</u>	<u>41.3%</u>	<u>35.8%</u>	<u>35.0%</u>
Probably Democrat Braxton Winston II	11.9%	8.0%	6.2%



Definitely Democrat Braxton Winston II	29.3%	27.9%	28.8%
Undecided	17.8%	24.7%	23.3%
Total	100.0%	100.0%	100.0%

Q12. State Treasurer Ballot: If the 2024 election for North Carolina State Treasurer were held today, and you had to make a choice, who would you vote for out of the following options?

	Sep '24	Aug '24	Mar '24
<u>Republican Brad Briner</u>	<u>42.1%</u>	<u>40.3%</u>	<u>42.8%</u>
Definitely Republican Brad Briner	31.3%	26.2%	33.0%
Probably Republican Brad Briner	10.8%	14.1%	9.8%
<u>Democrat Wesley Harris</u>	<u>40.4%</u>	<u>35.2%</u>	<u>37.4%</u>
Probably Democrat Wesley Harris	13.6%	6.9%	7.9%
Definitely Democrat Wesley Harris	26.9%	28.3%	29.5%
Undecided	17.5%	24.5%	19.7%
Total	100.0%	100.0%	100.0%

Q13. Superintendent of Public Instruction Ballot: If the 2024 election for North Carolina Superintendent of Public Instruction were held today, and you had to make a choice, who would you vote for out of the following options?

	Sep '24	Aug '24	Mar '24
<u>Republican Michele Morrow</u>	<u>39.2%</u>	<u>41.5%</u>	<u>40.8%</u>
Definitely Republican Michele Morrow	30.7%	26.6%	33.7%
Probably Republican Michele Morrow	8.5%	14.9%	7.1%
<u>Democrat Maurice "Mo" Green</u>	<u>43.3%</u>	<u>37.0%</u>	<u>39.1%</u>
Probably Democrat Maurice "Mo" Green	11.0%	7.5%	8.4%
Definitely Democrat Maurice "Mo" Green	32.2%	29.4%	30.7%
Undecided	17.5%	21.5%	20.1%
Total	100.0%	100.0%	100.0%

Q14. State Auditor Ballot: If the 2024 election for North Carolina State Auditor were held today, and you had to make a choice, who would you vote for out of the following options?

	Sep '24	Aug '24
<u>Republican Dave Boliek</u>	<u>38.9%</u>	<u>35.5%</u>
Definitely Republican Dave Boliek	29.5%	23.9%
Probably Republican Dave Boliek	9.4%	11.6%
<u>Democrat Jessica Holmes</u>	<u>38.3%</u>	<u>34.7%</u>
Definitely Democrat Jessica Holmes	28.9%	27.7%
Probably Democrat Jessica Holmes	9.4%	6.9%
<u>Libertarian Bob Drach</u>	<u>3.2%</u>	<u>4.0%</u>
Definitely Libertarian Bob Drach	1.5%	2.4%
Probably Libertarian Bob Drach	1.7%	1.6%
Undecided	19.5%	25.9%
Total	100.0%	100.0%

Q15. Insurance Commissioner Ballot: If the 2024 election for North Carolina Insurance Commissioner were held today, and you had to make a choice, who would you vote for out of the following options?

	Freq.	%
<u>Republican Mike Causey</u>	<u>246</u>	<u>41.1%</u>
Definitely Republican Mike Causey	179	29.9%
Probably Republican Mike Causey	67	11.2%



<u>Democrat Natasha Marcus</u>	<u>238</u>	<u>39.7%</u>
Probably Democrat Natasha Marcus	74	12.3%
Definitely Democrat Natasha Marcus	165	27.5%
Undecided	115	19.2%
Total	600	100.0%

Q16. Agriculture Commissioner Ballot: If the 2024 election for North Carolina Agriculture Commissioner were held today, and you had to make a choice, who would you vote for out of the following options?

	Freq.	%
<u>Republican Steve Troxler</u>	<u>246</u>	<u>41.1%</u>
Definitely Republican Steve Troxler	197	32.9%
Probably Republican Steve Troxler	49	8.2%
<u>Democrat Sarah Taber</u>	<u>228</u>	<u>37.9%</u>
Definitely Democrat Sarah Taber	163	27.2%
Probably Democrat Sarah Taber	64	10.7%
<u>Libertarian Sean Haugh</u>	<u>11</u>	<u>1.9%</u>
Definitely Libertarian Sean Haugh	6	0.9%
Probably Libertarian Sean Haugh	6	0.9%
Undecided	115	19.2%
Total	600	100.0%

Q17. Secretary of State Ballot: If the 2024 election for North Carolina Secretary of State were held today, and you had to make a choice, who would you vote for out of the following options?

	Freq.	%
<u>Republican Chad Brown</u>	<u>249</u>	<u>41.5%</u>
Definitely Republican Chad Brown	193	32.1%
Probably Republican Chad Brown	57	9.4%
<u>Democrat Elaine Marshall</u>	<u>259</u>	<u>43.2%</u>
Probably Democrat Elaine Marshall	70	11.6%
Definitely Democrat Elaine Marshall	189	31.6%
Undecided	92	15.3%
Total	600	100.0%

Q18. Supreme Court Ballot: If the 2024 election for North Carolina Supreme Court Justice were held today, and you had to make a choice, who would you vote for out of the following options?

	Sep '24	Aug '24	Mar '24
<u>Republican Jefferson Griffin</u>	<u>41.2%</u>	<u>39.9%</u>	<u>41.4%</u>
Definitely Republican Jefferson Griffin	32.1%	28.3%	32.0%
Probably Republican Jefferson Griffin	9.1%	11.6%	9.3%
<u>Democrat Allison Riggs</u>	<u>43.7%</u>	<u>37.2%</u>	<u>39.4%</u>
Probably Democrat Allison Riggs	13.1%	6.1%	6.3%
Definitely Democrat Allison Riggs	30.6%	31.1%	33.1%
Undecided	15.1%	22.9%	19.3%
Total	100.0%	100.0%	100.0%

Q19. Voting Constitutional Amendment: Would you support or oppose a North Carolina state constitutional amendment to provide that "only a citizen of the United States who is 18 years of age and otherwise possessing the qualifications for voting shall be entitled to vote at any election in this State"?

	Sep '24	Aug '24
<u>Support</u>	<u>75.9%</u>	<u>79.7%</u>



Strongly support	62.2%	66.8%
Somewhat support	13.7%	12.9%
<u>Oppose</u>	<u>12.7%</u>	<u>10.3%</u>
Somewhat oppose	4.7%	3.7%
Strongly oppose	8.0%	6.6%
Unsure	11.4%	10.0%
Total	100.0%	100.0%

Q20. Third Party Candidate Opinion: Which most closely describes your opinion about having third party candidates, beyond those representing the Republican Party or Democratic Party?

	Freq.	%
It is good to give voters more options.	296	49.3%
Third party candidates are spoilers that take away votes from major candidates.	208	34.7%
Unsure	96	15.9%
Total	600	100.0%

Q21. Candidate Info Source: What do you believe is the most reliable source of information on

	Freq.	%
Campaign ads	1	0.1%
Debates	155	25.8%
Online news	57	9.6%
Social media posts	18	3.0%
Direct mail and candidates' websites	39	6.5%
Candidate rallies and speeches	96	16.0%
Newspaper/Radio/TV news	104	17.4%
Endorsements from other candidates	15	2.5%
Unsure	115	19.1%
Total	600	100.0%

Q22. Election Ad Truth: How truthful do you consider election ads to be?

	Freq.	%
<u>Truthful</u>	<u>164</u>	<u>27.3%</u>
Completely truthful	18	3.0%
Somewhat truthful	146	24.4%
<u>Untruthful</u>	<u>395</u>	<u>65.9%</u>
Somewhat untruthful	280	46.7%
Completely untruthful	115	19.1%
Unsure	41	6.8%
Total	600	100.0%

Q23. Gender

	Freq.	%
Female	331	55.1%
Male	269	44.9%
Total	600	100.0%

Q24. Age Range

	Freq.	%
<u>Under 50</u>	<u>278</u>	<u>46.4%</u>
18 - 34	140	23.3%
35 - 49	138	23.0%
<u>50 and Over</u>	<u>322</u>	<u>53.6%</u>
50 - 64	172	28.7%



65 or older	150	25.0%
Total	600	100.0%

Q25. Partisanship by Registration

	Freq.	%
Republican	196	32.7%
Democrat	203	33.9%
Independent/Other	177	29.5%
Unsure	23	3.9%
Total	600	100.0%

Q26. Ideology

	Freq.	%
<u>Conservative</u>	<u>275</u>	<u>45.8%</u>
Very conservative	146	24.3%
Somewhat conservative	129	21.5%
<u>Moderate</u>	<u>151</u>	<u>25.2%</u>
<u>Liberal</u>	<u>148</u>	<u>24.7%</u>
Somewhat liberal	84	14.0%
Very liberal	64	10.7%
Unsure	26	4.3%
Total	600	100.0%

Q27. Urbanicity/Community Type

	Freq.	%
Rural	289	48.1%
Suburban	233	38.9%
Urban	78	13.0%
Total	600	100.0%

Q28. Income by Response

	Freq.	%
Less than \$40,000	109	18.1%
\$40,000 - \$69,999	127	21.1%
\$70,000 - \$99,999	117	19.5%
\$100,000 or more	195	32.5%
Unsure	52	8.7%
Total	600	100.0%

Q29. Race/Ethnicity

	Freq.	%
White or Caucasian	404	67.3%
Asian or Pacific Islander	8	1.3%
Black or African American	129	21.5%
Hispanic or Latino	21	3.5%
Other	26	4.3%
Unsure	12	2.1%
Total	600	100.0%

Q30. 2020 Retro Ballot

	Freq.	%
Republican Donald Trump	279	46.5%
Democrat Joe Biden	265	44.1%
Another candidate	15	2.4%
Did not vote in 2020	33	5.4%
Unsure	9	1.5%
Total	600	100.0%



Q31. Education Level

	Freq.	%
No College	339	56.5%
Some high school	13	2.1%
High school diploma/GED	92	15.4%
Technical Certification	24	4.0%
Some college or Associate's Degree	210	35.0%
At least College	254	42.3%
Four-year undergraduate or Bachelor's Degree	142	23.6%
Graduate degree or further	112	18.7%
Unsure	7	1.2%
Total	600	100.0%

Q32. General Election X of 4

	Freq.	%
0 of 4	54	8.9%
1 of 4	79	13.2%
2 of 4	113	18.8%
3 of 4	115	19.1%
4 of 4	240	40.0%
Total	600	100.0%

Q33. Geo

	Freq.	%
Charlotte/West	215	35.9%
Central	110	18.3%
Raleigh-Durham	188	31.4%
Coastal	87	14.4%
Total	600	100.0%

Q34. Geo - CD

	Freq.	%
1	43	7.1%
2	44	7.4%
3	44	7.4%
4	32	5.4%
5	44	7.3%
6	37	6.2%
7	45	7.5%
8	29	4.8%
9	38	6.3%
10	57	9.5%
11	46	7.7%
12	31	5.1%
13	53	8.8%
14	58	9.6%
Total	600	100.0%

Q35. Geo - DMA

	Freq.	%
Charlotte/West	215	35.9%
Charlotte	164	27.4%
Greenville-Spart-Asheville-And	48	8.1%
Chattanooga	2	0.3%
Atlanta	1	0.1%
Central	110	18.3%



Greensboro-H.Point-W.Salem	104	17.3%
Myrtle Beach-Florence	6	1.0%
<u>Raleigh-Durham (Fayetteville)</u>	<u>188</u>	<u>31.4%</u>
<u>Coastal</u>	<u>87</u>	<u>14.4%</u>
Greenville-N.Bern-Washngtn	42	6.9%
Wilmington	34	5.7%
Norfolk-Portsmth-Newpt Nws	11	1.8%
Total	600	100.0%

Q36. Age + Income

	Freq.	%
<65 <\$40k	73	12.2%
<65 \$40k-\$70k	82	13.7%
<65 \$70k-\$100k	94	15.6%
<65 \$100k+	164	27.3%
65+ <\$40k	36	5.9%
65+ \$40k-\$70k	45	7.4%
65+ \$70k-\$100k	23	3.9%
65+ \$100k+	31	5.2%
Unsure	52	8.7%
Total	600	100.0%

Q37. Gender + Age

	Freq.	%
F 18 - 34	77	12.9%
F 35 - 49	76	12.6%
F 50 - 64	94	15.6%
F 65+	84	14.0%
M 18 - 34	62	10.4%
M 35 - 49	62	10.4%
M 50 - 64	79	13.1%
M 65+	66	11.0%
Total	600	100.0%

Q38. Race + Gender

	Freq.	%
White Female	217	36.1%
White Male	187	31.2%
Asian Female	5	0.8%
Asian Male	3	0.6%
Black Female	72	12.0%
Black Male	57	9.5%
Hispanic Female	12	2.1%
Hispanic Male	9	1.4%
Other Female	17	2.8%
Other Male	8	1.4%
Unsure	12	2.1%
Total	600	100.0%

Q39. Gender + Education

	Freq.	%
Female At least College	133	22.2%
Female No degree	196	32.6%
Male At least College	121	20.2%
Male No degree	143	23.8%
Unsure	7	1.2%
Total	600	100.0%



Q40. Partisanship + Age

	Freq.	%
Republican 18-34	36	6.0%
Republican 35-49	42	7.0%
Republican 50-64	64	10.6%
Republican 65+	54	9.1%
Democrat 18-34	45	7.4%
Democrat 35-49	44	7.3%
Democrat 50-64	58	9.7%
Democrat 65+	57	9.4%
Independent/Other 18-34	52	8.7%
Independent/Other 35-49	44	7.4%
Independent/Other 50-64	45	7.5%
Independent/Other 65+	36	6.0%
Unsure	23	3.9%
Total	600	100.0%

Q41. Partisanship + Gender

	Freq.	%
Republican Female	92	15.3%
Republican Male	104	17.4%
Democrat Female	114	19.1%
Democrat Male	89	14.8%
Independent/Other Female	105	17.5%
Independent/Other Male	72	12.0%
Unsure	23	3.9%
Total	600	100.0%

METHODOLOGY

This probabilistic survey was conducted September 15 - 16, 2024, with 600 likely general election voters. It has a margin of error of $\pm 3.99\%$. Known registered voters were interviewed via live phones and SMS. This survey was weighted to the likely general election voters universe.

ABOUT THE FIRM

[Cygnal](#) is an award-winning international polling, public opinion, and predictive analytics firm that pioneered multi-mode polling, text-to-web collection, and emotive analysis. Cygnal consistently ranks as the most accurate firm, and clients rely on Cygnal's ability to create intelligence for action. Its team members have worked in all 50 states and multiple countries on more than 3,000 corporate, public affairs, and political campaigns.

