

**CYNAL**

**Survey of Likely General Election Voters**

North Carolina Statewide

*Conducted October 12 – 14, 2024*

n=600 |  $\pm 3.99\%$

**Q1. Vote Method:** How do you plan to vote in the 2024 general election for President, Congress, and state offices?

	Oct '24	Sep '24	Aug '24	May '24
<b><u>Vote in-person on Election Day</u></b>	<b><u>34.3%</u></b>	<b><u>41.4%</u></b>	<b><u>48.5%</u></b>	<b><u>45.0%</u></b>
Definitely vote in-person on Election Day	27.1%	29.5%	37.1%	32.9%
Probably vote in-person on Election Day	7.1%	11.8%	11.4%	12.1%
<b><u>Vote absentee by mail</u></b>	<b><u>7.0%</u></b>	<b><u>5.0%</u></b>	<b><u>5.5%</u></b>	<b><u>5.6%</u></b>
Definitely vote absentee by mail	5.9%	4.4%	3.9%	2.9%
Probably vote absentee by mail	1.1%	0.6%	1.5%	2.7%
<b><u>Vote early in-person</u></b>	<b><u>58.7%</u></b>	<b><u>53.6%</u></b>	<b><u>46.0%</u></b>	<b><u>49.4%</u></b>
Definitely vote early in-person	38.7%	29.2%	25.4%	28.9%
Probably vote early in-person	20.1%	24.4%	20.6%	20.5%
Total	100.0%	100.0%	100.0%	100.0%

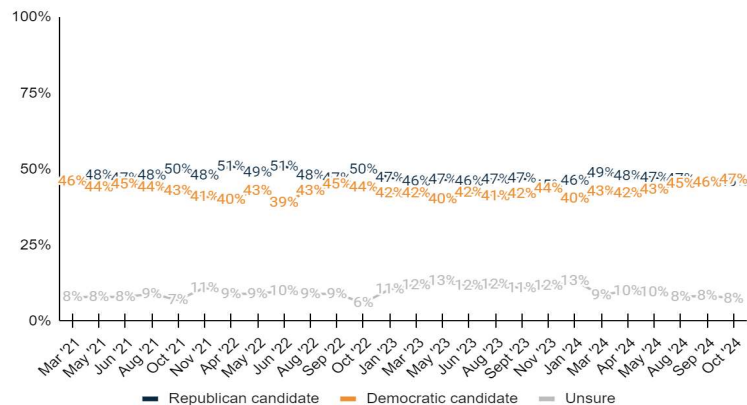
**Q2. North Carolina RD/WT:** Generally speaking, would you say things in North Carolina are headed in the right direction or off on the wrong track?

	Oct '24	Sep '24	Aug '24	May '24
<b><u>Right direction</u></b>	<b><u>38.2%</u></b>	<b><u>32.9%</u></b>	<b><u>33.8%</u></b>	<b><u>34.5%</u></b>
Definitely the right direction	6.7%	5.3%	5.8%	7.0%
Mostly the right direction	31.4%	27.5%	27.9%	27.6%
<b><u>Wrong track</u></b>	<b><u>45.4%</u></b>	<b><u>52.6%</u></b>	<b><u>52.6%</u></b>	<b><u>50.1%</u></b>
Mostly the wrong track	25.1%	25.3%	27.8%	27.9%
Definitely the wrong track	20.3%	27.3%	24.8%	22.3%
Unsure	16.5%	14.5%	13.6%	15.3%
Total	100.0%	100.0%	100.0%	100.0%

**Q3. Top Issue:** When it comes to each of the following issues, which is the most important issue in the 2024 election?

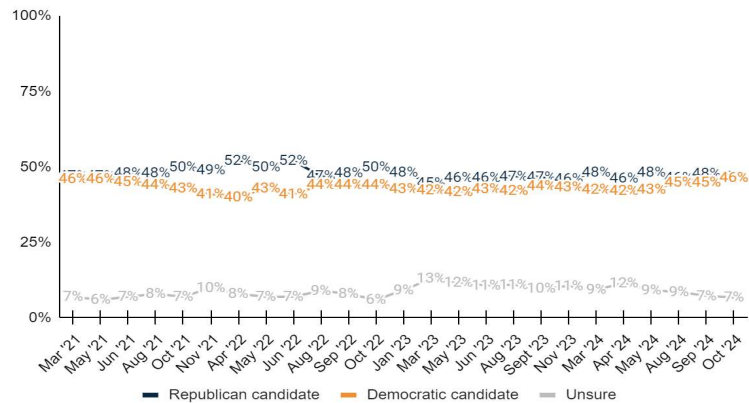
	Oct '24	Sep '24
Inflation/Prices	32.1%	29.8%
Abortion	16.2%	15.6%
Jobs/Economy	14.5%	15.8%
Immigration	12.8%	15.9%
Taxes/Spending	8.5%	6.4%
Education	5.5%	6.6%
Energy/Environment	3.9%	2.6%
Crime/Public safety	3.3%	2.9%
Unsure	3.3%	4.3%
Total	100.0%	100.0%

**Q4. Generic State Leg Ballot:** If the 2024 election was held today, and you had to make a choice, would you vote for the Republican or Democratic candidate for the North Carolina State Legislature?



	Oct '24	Sep '24	Aug '24	May '24
<b><u>Republican candidate</u></b>	<b><u>45.8%</u></b>	<b><u>46.0%</u></b>	<b><u>46.7%</u></b>	<b><u>47.2%</u></b>
Definitely the Republican candidate	40.7%	39.7%	39.3%	39.0%
Probably the Republican candidate	5.1%	6.3%	7.4%	8.2%
<b><u>Democratic candidate</u></b>	<b><u>46.6%</u></b>	<b><u>45.6%</u></b>	<b><u>45.3%</u></b>	<b><u>43.2%</u></b>
Probably the Democratic candidate	4.9%	6.7%	6.6%	8.7%
Definitely the Democratic candidate	41.7%	38.9%	38.7%	34.5%
Unsure	7.5%	8.4%	8.0%	9.5%
Total	100.0%	100.0%	100.0%	100.0%

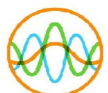
**Q5. Generic Congress Ballot:** And, regardless of how you would vote at the state level, if the 2024 election for United States Congress was held today, and you had to make a choice, would you vote for the Republican candidate or the Democratic candidate?



	Oct '24	Sep '24	Aug '24	May '24
<b><u>Republican candidate</u></b>	<b><u>46.9%</u></b>	<b><u>47.9%</u></b>	<b><u>46.5%</u></b>	<b><u>48.3%</u></b>
Definitely the Republican candidate	40.1%	40.4%	38.1%	37.4%
Probably the Republican candidate	6.7%	7.5%	8.3%	10.8%
<b><u>Democratic candidate</u></b>	<b><u>46.4%</u></b>	<b><u>44.8%</u></b>	<b><u>44.9%</u></b>	<b><u>42.6%</u></b>
Probably the Democratic candidate	6.0%	7.9%	7.2%	9.5%
Definitely the Democratic candidate	40.3%	36.9%	37.7%	33.1%
Unsure	6.8%	7.3%	8.6%	9.1%
Total	100.0%	100.0%	100.0%	100.0%

**Q6. Presidential Ballot:** Thinking now about the 2024 general election... If the 2024 general election for President was held today, and you had to make a choice based on these options, who would you vote for?

	Oct '24	Sep '24	Aug '24	May '24
<b><u>Republican Donald Trump</u></b>	<b><u>47.2%</u></b>	<b><u>45.6%</u></b>	<b><u>47.2%</u></b>	<b><u>42.6%</u></b>
Definitely Republican Donald Trump	44.8%	43.1%	41.9%	35.5%
Probably Republican Donald Trump	2.4%	2.5%	5.3%	7.1%
<b><u>Democrat Kamala Harris</u></b>	<b><u>46.6%</u></b>	<b><u>45.3%</u></b>	<b><u>44.1%</u></b>	<b><u>38.1%</u></b>
Definitely Democrat Kamala Harris	43.6%	38.7%	38.5%	30.9%
Probably Democrat Kamala Harris	3.0%	6.6%	5.6%	7.2%
<b><u>Libertarian Chase Oliver</u></b>	<b><u>0.9%</u></b>	<b><u>0.9%</u></b>	<b><u>0.6%</u></b>	-
Definitely Libertarian Chase Oliver	0.4%	0.4%	0.4%	-
Probably Libertarian Chase Oliver	0.5%	0.5%	0.2%	-
<b><u>Constitution Party Randall Terry</u></b>	<b><u>0.1%</u></b>	<b><u>0.2%</u></b>	<b><u>0.0%</u></b>	-
Definitely Constitution Party Randall Terry	0.1%	0.0%	0.0%	-



Probably Constitution Party Randall Terry	0.0%	0.2%	0.0%	-
<b><u>Green Party Jill Stein</u></b>	<b><u>0.4%</u></b>	<b><u>0.4%</u></b>	<b><u>0.4%</u></b>	-
Definitely Green Party Jill Stein	0.0%	0.4%	0.0%	-
Probably Green Party Jill Stein	0.4%	0.0%	0.4%	-
<b><u>Justice for All Party Cornel West</u></b>	<b><u>0.6%</u></b>	<b><u>1.6%</u></b>	-	-
Definitely Justice for All Party Cornel West	0.3%	0.3%	-	-
Probably Justice for All Party Cornel West	0.3%	1.4%	-	-
Undecided	4.1%	6.0%	4.1%	6.3%
Total	100.0%	100.0%	100.0%	100.0%

**Q7. Gubernatorial Ballot:** If the North Carolina 2024 gubernatorial election was held today, who would you vote for out of the following options?

	<b>Oct '24</b>	<b>Sep '24</b>	<b>Aug '24</b>	<b>May '24</b>
<b><u>Republican Mark Robinson</u></b>	<b><u>35.8%</u></b>	<b><u>39.2%</u></b>	<b><u>38.2%</u></b>	<b><u>39.2%</u></b>
Definitely Republican Mark Robinson	28.9%	32.2%	30.9%	31.3%
Probably Republican Mark Robinson	6.8%	7.0%	7.4%	7.9%
<b><u>Democrat Josh Stein</u></b>	<b><u>49.3%</u></b>	<b><u>45.5%</u></b>	<b><u>42.6%</u></b>	<b><u>39.1%</u></b>
Definitely Democrat Josh Stein	43.4%	36.1%	35.2%	28.8%
Probably Democrat Josh Stein	5.9%	9.4%	7.5%	10.3%
<b><u>Green Party Wayne Turner</u></b>	<b><u>0.8%</u></b>	<b><u>0.3%</u></b>	<b><u>0.7%</u></b>	<b><u>0.8%</u></b>
Definitely Green Party Wayne Turner	0.4%	0.2%	0.7%	0.3%
Probably Green Party Wayne Turner	0.5%	0.2%	0.1%	0.6%
<b><u>Libertarian Mike Ross</u></b>	<b><u>2.5%</u></b>	<b><u>2.4%</u></b>	<b><u>3.4%</u></b>	<b><u>3.7%</u></b>
Definitely Libertarian Mike Ross	1.6%	1.3%	0.9%	1.6%
Probably Libertarian Mike Ross	0.9%	1.1%	2.6%	2.1%
<b><u>Constitution Party Vinny Smith</u></b>	<b><u>0.3%</u></b>	<b><u>0.2%</u></b>	-	-
Definitely Constitution Party Vinny Smith	0.1%	0.2%	-	-
Probably Constitution Party Vinny Smith	0.2%	0.0%	-	-
Undecided	11.3%	12.5%	14.9%	17.1%
Total	100.0%	100.0%	100.0%	100.0%

**Q8. LG Ballot:** If the 2024 election for North Carolina Lieutenant Governor were held today, and you had to make a choice, who would you vote for out of the following options?

	<b>Oct '24</b>	<b>Sep '24</b>	<b>Aug '24</b>	<b>May '24</b>
<b><u>Republican Hal Weatherman</u></b>	<b><u>40.8%</u></b>	<b><u>40.1%</u></b>	<b><u>37.8%</u></b>	
Definitely Republican Hal Weatherman	35.8%	32.3%	26.9%	
Probably Republican Hal Weatherman	5.0%	7.8%	10.9%	
<b><u>Democrat Rachel Hunt</u></b>	<b><u>43.3%</u></b>	<b><u>41.6%</u></b>	<b><u>35.9%</u></b>	
Definitely Democrat Rachel Hunt	36.4%	30.6%	28.4%	
Probably Democrat Rachel Hunt	6.8%	11.0%	7.5%	
<b><u>Libertarian Shannon Bray</u></b>	<b><u>2.2%</u></b>	<b><u>1.7%</u></b>	<b><u>4.6%</u></b>	
Definitely Libertarian Shannon Bray	1.2%	0.5%	1.7%	
Probably Libertarian Shannon Bray	1.0%	1.3%	2.9%	
<b><u>Constitution Party Wayne Jones</u></b>	<b><u>1.0%</u></b>	<b><u>1.2%</u></b>	-	



Definitely Constitution Party Wayne Jones	0.5%	0.5%	-
Probably Constitution Party Wayne Jones	0.5%	0.6%	-
Undecided	12.7%	15.4%	21.8%
Total	100.0%	100.0%	100.0%

**Q9. Attorney General Ballot:** If the 2024 election for North Carolina Attorney General were held today, and you had to make a choice, who would you vote for out of the following options?

	Oct '24	Sep '24	Aug '24	Mar '24
<b><u>Republican Dan Bishop</u></b>	<b><u>43.4%</u></b>	<b><u>43.1%</u></b>	<b><u>41.7%</u></b>	<b><u>40.6%</u></b>
Definitely Republican Dan Bishop	35.3%	33.1%	27.5%	32.4%
Probably Republican Dan Bishop	8.0%	10.1%	14.2%	8.2%
<b><u>Democrat Jeff Jackson</u></b>	<b><u>46.1%</u></b>	<b><u>44.6%</u></b>	<b><u>37.8%</u></b>	<b><u>38.5%</u></b>
Probably Democrat Jeff Jackson	8.6%	12.8%	7.1%	7.7%
Definitely Democrat Jeff Jackson	37.5%	31.8%	30.8%	30.9%
Undecided	10.5%	12.3%	20.5%	20.8%
Total	100.0%	100.0%	100.0%	100.0%

**Q10. Labor Commissioner Ballot:** If the 2024 election for North Carolina Labor Commissioner were held today, and you had to make a choice, who would you vote for out of the following options?

	Oct '24	Sep '24	Aug '24	Mar '24
<b><u>Republican Luke Farley</u></b>	<b><u>43.5%</u></b>	<b><u>40.9%</u></b>	<b><u>39.5%</u></b>	<b><u>41.7%</u></b>
Definitely Republican Luke Farley	33.8%	31.3%	24.3%	32.9%
Probably Republican Luke Farley	9.8%	9.6%	15.2%	8.8%
<b><u>Democrat Braxton Winston II</u></b>	<b><u>41.7%</u></b>	<b><u>41.3%</u></b>	<b><u>35.8%</u></b>	<b><u>35.0%</u></b>
Probably Democrat Braxton Winston II	7.7%	11.9%	8.0%	6.2%
Definitely Democrat Braxton Winston II	34.0%	29.3%	27.9%	28.8%
Undecided	14.7%	17.8%	24.7%	23.3%
Total	100.0%	100.0%	100.0%	100.0%

**Q11. State Treasurer Ballot:** If the 2024 election for North Carolina State Treasurer were held today, and you had to make a choice, who would you vote for out of the following options?

	Oct '24	Sep '24	Aug '24	Mar '24
<b><u>Republican Brad Briner</u></b>	<b><u>43.4%</u></b>	<b><u>42.1%</u></b>	<b><u>40.3%</u></b>	<b><u>42.8%</u></b>
Definitely Republican Brad Briner	33.0%	31.3%	26.2%	33.0%
Probably Republican Brad Briner	10.4%	10.8%	14.1%	9.8%
<b><u>Democrat Wesley Harris</u></b>	<b><u>41.9%</u></b>	<b><u>40.4%</u></b>	<b><u>35.2%</u></b>	<b><u>37.4%</u></b>
Probably Democrat Wesley Harris	9.7%	13.6%	6.9%	7.9%
Definitely Democrat Wesley Harris	32.2%	26.9%	28.3%	29.5%
Undecided	14.7%	17.5%	24.5%	19.7%
Total	100.0%	100.0%	100.0%	100.0%

**Q12. Superintendent of Public Instruction Ballot:** If the 2024 election for North Carolina Superintendent of Public Instruction were held today, and you had to make a choice, who would you vote for out of the following options?

	Oct '24	Sep '24	Aug '24	Mar '24
<b><u>Republican Michele Morrow</u></b>	<b><u>43.2%</u></b>	<b><u>39.2%</u></b>	<b><u>41.5%</u></b>	<b><u>40.8%</u></b>
Definitely Republican Michele Morrow	31.5%	30.7%	26.6%	33.7%
Probably Republican Michele Morrow	11.7%	8.5%	14.9%	7.1%
<b><u>Democrat Maurice "Mo" Green</u></b>	<b><u>45.7%</u></b>	<b><u>43.3%</u></b>	<b><u>37.0%</u></b>	<b><u>39.1%</u></b>
Probably Democrat Maurice "Mo" Green	7.0%	11.0%	7.5%	8.4%



Definitely Democrat Maurice "Mo" Green	38.7%	32.2%	29.4%	30.7%
Undecided	11.1%	17.5%	21.5%	20.1%
Total	100.0%	100.0%	100.0%	100.0%

**Q13. State Auditor Ballot:** If the 2024 election for North Carolina State Auditor were held today, and you had to make a choice, who would you vote for out of the following options?

	<b>Oct '24</b>	<b>Sep '24</b>	<b>Aug '24</b>
<b><u>Republican Dave Boliek</u></b>	<b><u>40.4%</u></b>	<b><u>38.9%</u></b>	<b><u>35.5%</u></b>
Definitely Republican Dave Boliek	32.5%	29.5%	23.9%
Probably Republican Dave Boliek	7.9%	9.4%	11.6%
<b><u>Democrat Jessica Holmes</u></b>	<b><u>40.1%</u></b>	<b><u>38.3%</u></b>	<b><u>34.7%</u></b>
Definitely Democrat Jessica Holmes	34.1%	28.9%	27.7%
Probably Democrat Jessica Holmes	6.0%	9.4%	6.9%
<b><u>Libertarian Bob Drach</u></b>	<b><u>3.4%</u></b>	<b><u>3.2%</u></b>	<b><u>4.0%</u></b>
Definitely Libertarian Bob Drach	1.0%	1.5%	2.4%
Probably Libertarian Bob Drach	2.4%	1.7%	1.6%
Undecided	16.0%	19.5%	25.9%
Total	100.0%	100.0%	100.0%

**Q14. Insurance Commissioner Ballot:** If the 2024 election for North Carolina Insurance Commissioner were held today, and you had to make a choice, who would you vote for out of the following options?

	<b>Oct '24</b>	<b>Sep '24</b>
<b><u>Republican Mike Causey</u></b>	<b><u>44.2%</u></b>	<b><u>41.1%</u></b>
Definitely Republican Mike Causey	33.7%	29.9%
Probably Republican Mike Causey	10.5%	11.2%
<b><u>Democrat Natasha Marcus</u></b>	<b><u>41.0%</u></b>	<b><u>39.7%</u></b>
Probably Democrat Natasha Marcus	9.6%	12.3%
Definitely Democrat Natasha Marcus	31.4%	27.5%
Undecided	14.7%	19.2%
Total	100.0%	100.0%

**Q15. Agriculture Commissioner Ballot:** If the 2024 election for North Carolina Agriculture Commissioner were held today, and you had to make a choice, who would you vote for out of the following options?

	<b>Oct '24</b>	<b>Sep '24</b>
<b><u>Republican Steve Troxler</u></b>	<b><u>45.3%</u></b>	<b><u>41.1%</u></b>
Definitely Republican Steve Troxler	36.5%	32.9%
Probably Republican Steve Troxler	8.8%	8.2%
<b><u>Democrat Sarah Taber</u></b>	<b><u>38.4%</u></b>	<b><u>37.9%</u></b>
Definitely Democrat Sarah Taber	32.3%	27.2%
Probably Democrat Sarah Taber	6.2%	10.7%
<b><u>Libertarian Sean Haugh</u></b>	<b><u>2.4%</u></b>	<b><u>1.9%</u></b>
Definitely Libertarian Sean Haugh	0.9%	0.9%
Probably Libertarian Sean Haugh	1.5%	0.9%
Undecided	13.9%	19.2%
Total	100.0%	100.0%



**Q16. Secretary of State Ballot:** If the 2024 election for North Carolina Secretary of State were held today, and you had to make a choice, who would you vote for out of the following options?

	<b>Oct '24</b>	<b>Sep '24</b>
<b><u>Republican Chad Brown</u></b>	<b><u>42.9%</u></b>	<b><u>41.5%</u></b>
Definitely Republican Chad Brown	33.4%	32.1%
Probably Republican Chad Brown	9.5%	9.4%
<b><u>Democrat Elaine Marshall</u></b>	<b><u>45.1%</u></b>	<b><u>43.2%</u></b>
Probably Democrat Elaine Marshall	9.2%	11.6%
Definitely Democrat Elaine Marshall	36.0%	31.6%
Undecided	12.0%	15.3%
Total	100.0%	100.0%

**Q17. Supreme Court Ballot:** If the 2024 election for North Carolina Supreme Court Justice were held today, and you had to make a choice, who would you vote for out of the following options?

	<b>Oct '24</b>	<b>Sep '24</b>	<b>Aug '24</b>	<b>Mar '24</b>
<b><u>Republican Jefferson Griffin</u></b>	<b><u>44.7%</u></b>	<b><u>41.2%</u></b>	<b><u>39.9%</u></b>	<b><u>41.4%</u></b>
Definitely Republican Jefferson Griffin	34.9%	32.1%	28.3%	32.0%
Probably Republican Jefferson Griffin	9.7%	9.1%	11.6%	9.3%
<b><u>Democrat Allison Riggs</u></b>	<b><u>43.3%</u></b>	<b><u>43.7%</u></b>	<b><u>37.2%</u></b>	<b><u>39.4%</u></b>
Probably Democrat Allison Riggs	8.0%	13.1%	6.1%	6.3%
Definitely Democrat Allison Riggs	35.3%	30.6%	31.1%	33.1%
Undecided	12.1%	15.1%	22.9%	19.3%
Total	100.0%	100.0%	100.0%	100.0%

**Q18. NC Emergency Response Confidence:** Now thinking about other issues... Given the recent destruction tied to Hurricane Helene, how much confidence do you have in the ability of North Carolina's emergency authorities to respond to natural disasters?

	<b>Freq.</b>	<b>%</b>
A great deal of confidence	229	38.2%
Some confidence	170	28.3%
Little or no confidence at all	178	29.7%
Unsure	23	3.9%
Total	600	100.0%

**Q19. FEMA Image:** Do you have a favorable or an unfavorable opinion of the Federal Emergency Management Agency, also known as FEMA?

	<b>Freq.</b>	<b>%</b>
<b><u>Favorable</u></b>	<b><u>278</u></b>	<b><u>46.4%</u></b>
Very favorable	159	26.6%
Somewhat favorable	119	19.8%
<b><u>Unfavorable</u></b>	<b><u>290</u></b>	<b><u>48.3%</u></b>
Somewhat unfavorable	102	17.0%
Very unfavorable	188	31.3%
Never heard of	0	0.1%
Unsure	31	5.2%
Total	600	100.0%

**Q20. Disaster Relief Responsibility:** To what extent do you believe the federal government should be responsible for providing disaster relief compared to the state and local government?

	<b>Freq.</b>	<b>%</b>
<b><u>Federal</u></b>	<b><u>136</u></b>	<b><u>22.7%</u></b>
Solely federal	17	2.8%
Primarily federal	120	20.0%
<b><u>Equally federal and state/local</u></b>	<b><u>373</u></b>	<b><u>62.2%</u></b>



<b><u>State and local</u></b>	<b><u>67</u></b>	<b><u>11.2%</u></b>
Primarily state and local	47	7.8%
Solely state and local	21	3.4%
Unsure	23	3.8%
Total	600	100.0%

**Q21. Gender**

	<b>Freq.</b>	<b>%</b>
Female	331	55.1%
Male	269	44.9%
Total	600	100.0%

**Q22. Age Range**

	<b>Freq.</b>	<b>%</b>
<b><u>Under 50</u></b>	<b><u>278</u></b>	<b><u>46.4%</u></b>
18 - 34	140	23.3%
35 - 49	138	23.0%
<b><u>50 and Over</u></b>	<b><u>322</u></b>	<b><u>53.6%</u></b>
50 - 64	172	28.7%
65 or older	150	24.9%
Total	600	100.0%

**Q23. Partisanship by Registration**

	<b>Freq.</b>	<b>%</b>
Republican	196	32.7%
Democrat	203	33.9%
Independent/Other	178	29.7%
Unsure	22	3.7%
Total	600	100.0%

**Q24. Ideology**

	<b>Freq.</b>	<b>%</b>
<b><u>Conservative</u></b>	<b><u>274</u></b>	<b><u>45.6%</u></b>
Very conservative	153	25.6%
Somewhat conservative	120	20.0%
<b><u>Moderate</u></b>	<b><u>165</u></b>	<b><u>27.6%</u></b>
<b><u>Liberal</u></b>	<b><u>128</u></b>	<b><u>21.4%</u></b>
Somewhat liberal	69	11.6%
Very liberal	59	9.8%
Unsure	33	5.4%
Total	600	100.0%

**Q25. Urbanicity/Community Type**

	<b>Freq.</b>	<b>%</b>
Rural	289	48.1%
Suburban	242	40.3%
Urban	70	11.6%
Total	600	100.0%

**Q26. Income by Response**

	<b>Freq.</b>	<b>%</b>
Less than \$40,000	100	16.7%
\$40,000 - \$69,999	138	23.0%
\$70,000 - \$99,999	107	17.9%





\$100,000 or more	207	34.5%
Unsure	47	7.9%
Total	600	100.0%

**Q27. Race/Ethnicity**

	<b>Freq.</b>	<b>%</b>
White or Caucasian	393	65.5%
Asian or Pacific Islander	6	1.0%
Black or African American	129	21.5%
Hispanic or Latino	26	4.3%
Other	34	5.7%
Unsure	12	2.0%
Total	600	100.0%

**Q28. 2020 Retro Ballot**

	<b>Freq.</b>	<b>%</b>
Republican Donald Trump	280	46.7%
Democrat Joe Biden	268	44.7%
Another candidate	9	1.5%
Did not vote in 2020	27	4.5%
Unsure	15	2.5%
Total	600	100.0%

**Q29. Education Level**

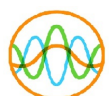
	<b>Freq.</b>	<b>%</b>
<b><u>No College</u></b>	<b><u>340</u></b>	<b><u>56.7%</u></b>
Some high school	8	1.3%
High school diploma/GED	97	16.2%
Technical Certification	21	3.5%
Some college or Associate's Degree	214	35.6%
<b><u>At least College</u></b>	<b><u>254</u></b>	<b><u>42.3%</u></b>
Four-year undergraduate or Bachelor's Degree	142	23.7%
Graduate degree or further	112	18.6%
Unsure	6	1.0%
Total	600	100.0%

**Q30. General Election X of 4**

	<b>Freq.</b>	<b>%</b>
0 of 4	54	9.0%
1 of 4	102	16.9%
2 of 4	109	18.1%
3 of 4	96	15.9%
4 of 4	240	40.0%
Total	600	100.0%

**Q31. Geo - DMA**

	<b>Freq.</b>	<b>%</b>
<b><u>Charlotte/West</u></b>	<b><u>215</u></b>	<b><u>35.8%</u></b>
Charlotte	164	27.4%
Greenville-Spart-Asheville-And	48	8.1%
Chattanooga	2	0.3%
Atlanta	1	0.1%
<b><u>Central</u></b>	<b><u>110</u></b>	<b><u>18.3%</u></b>
Greensboro-H.Point-W. Salem	104	17.3%
Myrtle Beach-Florence	6	1.0%
<b><u>Raleigh-Durham (Fayetteville)</u></b>	<b><u>188</u></b>	<b><u>31.4%</u></b>



<b><u>Coastal</u></b>	<b><u>87</u></b>	<b><u>14.5%</u></b>
Greenville-N.Bern-Washngtn	42	6.9%
Wilmington	34	5.7%
Norfolk-Portsmth-Newpt Nws	11	1.8%
Total	600	100.0%

**Q32. Geo - CD**

	<b>Freq.</b>	<b>%</b>
1	42	7.1%
2	44	7.4%
3	40	6.6%
4	40	6.7%
5	44	7.2%
6	40	6.6%
7	44	7.4%
8	38	6.3%
9	44	7.3%
10	44	7.3%
11	47	7.9%
12	36	6.0%
13	48	8.1%
14	49	8.2%
Total	600	100.0%

**Q33. Age + Income**

	<b>Freq.</b>	<b>%</b>
<65 <\$40k	61	10.2%
<65 \$40k-\$70k	99	16.5%
<65 \$70k-\$100k	77	12.8%
<65 \$100k+	182	30.4%
65+ <\$40k	39	6.5%
65+ \$40k-\$70k	39	6.5%
65+ \$70k-\$100k	31	5.1%
65+ \$100k+	25	4.1%
Unsure	47	7.9%
Total	600	100.0%

**Q34. Gender + Age**

	<b>Freq.</b>	<b>%</b>
F 18 - 34	77	12.9%
F 35 - 49	76	12.6%
F 50 - 64	94	15.6%
F 65+	84	14.0%
M 18 - 34	62	10.4%
M 35 - 49	62	10.4%
M 50 - 64	79	13.1%
M 65+	66	11.0%
Total	600	100.0%

**Q35. Race + Gender**

	<b>Freq.</b>	<b>%</b>
White Female	228	38.1%
White Male	165	27.4%
Asian Female	3	0.5%
Asian Male	3	0.5%
Black Female	65	10.9%
Black Male	64	10.6%
Hispanic Female	11	1.8%
Hispanic Male	15	2.5%
Other Female	17	2.8%



Other Male	17	2.8%
Unsure	12	2.0%
Total	600	100.0%

**Q36. Gender + Education**

	<b>Freq.</b>	<b>%</b>
Female At least College	134	22.3%
Female No degree	193	32.2%
Male At least College	121	20.1%
Male No degree	147	24.5%
Unsure	6	1.0%
Total	600	100.0%

**Q37. Partisanship + Age**

	<b>Freq.</b>	<b>%</b>
Republican 18-34	36	6.0%
Republican 35-49	42	7.0%
Republican 50-64	64	10.6%
Republican 65+	54	9.1%
Democrat 18-34	45	7.4%
Democrat 35-49	44	7.3%
Democrat 50-64	58	9.7%
Democrat 65+	57	9.4%
Independent/Other 18-34	53	8.8%
Independent/Other 35-49	44	7.4%
Independent/Other 50-64	46	7.6%
Independent/Other 65+	36	5.9%
Unsure	22	3.7%
Total	600	100.0%

**Q38. Partisanship + Gender**

	<b>Freq.</b>	<b>%</b>
Republican Female	111	18.6%
Republican Male	85	14.2%
Democrat Female	130	21.7%
Democrat Male	73	12.2%
Independent/Other Female	73	12.2%
Independent/Other Male	105	17.5%
Unsure	22	3.7%
Total	600	100.0%

**METHODOLOGY**

This probabilistic survey was conducted October 12 – 14, 2024, with 600 likely general election voters. It has a margin of error of  $\pm 3.99\%$ . Known registered voters were interviewed via live phones and SMS. This survey was weighted to the likely general election voters universe.

**ABOUT THE FIRM**

[Cygnal](#) is an award-winning international polling, public opinion, and predictive analytics firm that pioneered multi-mode polling, text-to-web collection, and emotive analysis. Cygnal consistently ranks as the most accurate firm, and clients rely on Cygnal's ability to create intelligence for action. Its team members have worked in all 50 states and multiple countries on more than 3,000 corporate, public affairs, and political campaigns.

